

## STEP 2. Physician Assessment

♦ Determine if exposure did occur

♦ Determine if Rabies Post Exposure Prophylaxis is warranted **immediately** or if need for PEP can **WAIT** until after conclusion of Health Unit Investigation

♦ If SMDHU has completed their rabies exposure investigation and has provided client with a "Seek Medical Advice Letter", conduct **FINAL** determination if Rabies PEP is required for client

### Physicians Assessment: Potential Rabies Exposure and need for Post-Exposure Prophylaxis (PEP)



**PRIOR to using ANY PEP from hospital inventory OR to request PEP delivery, you MUST speak to a SMDHU Public Health Inspector:**

M-F 8:30-4:30

1-877-721-7520 ext. 8894

After Hours: 1-888-225-7851

Did an exposure to rabies potentially occur?

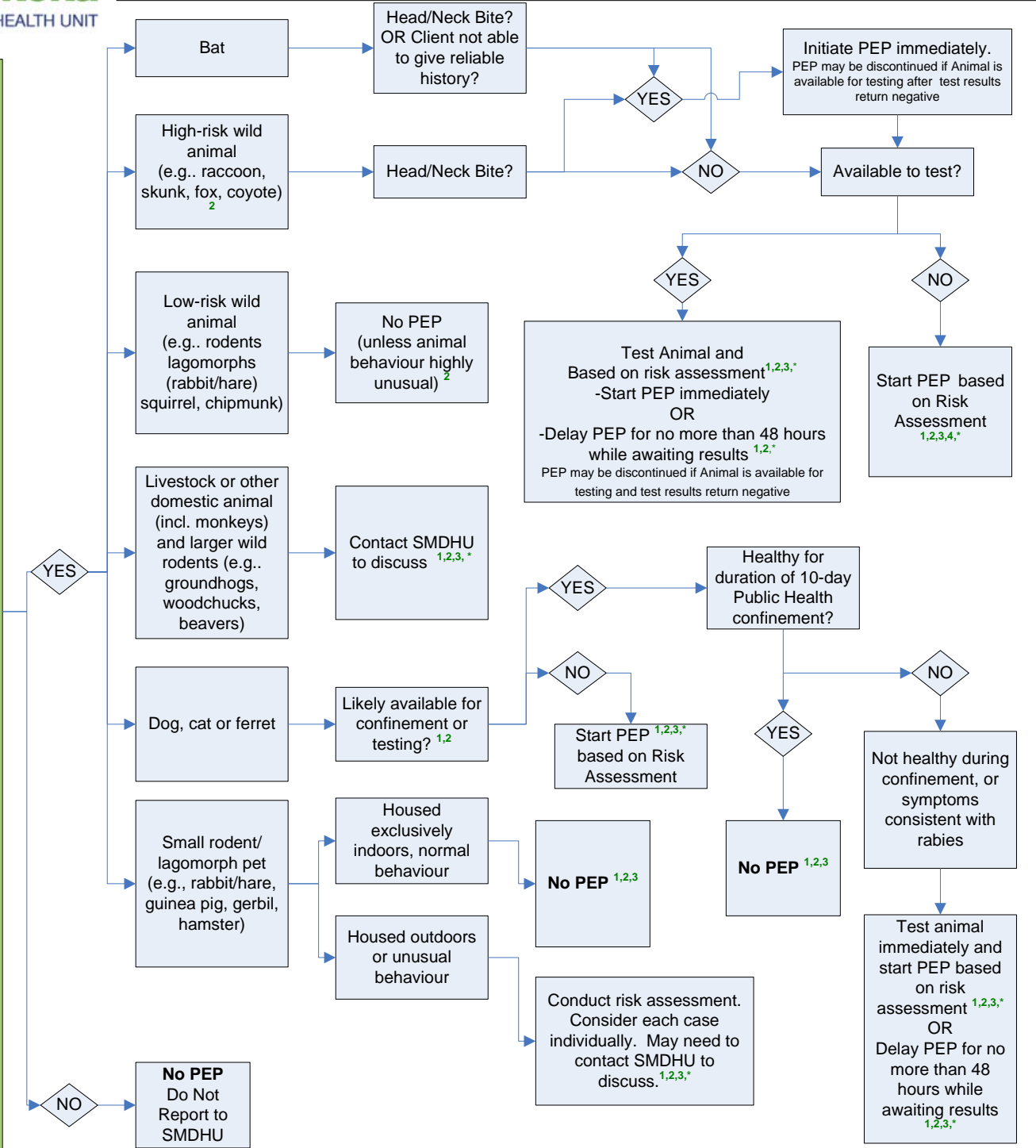
- Was the patient bitten or scratched by a mammal?

Report all mammal to human exposures to SMDHU

- Did the patient's open wound, broken skin from cuts or scratches or mucous membrane come in contact with saliva or tissue from the central nervous system of a mammal?
- Did the patient have direct contact with a bat such that a bite or scratch cannot be ruled out? (Patient can't give reliable history? Child? Cognitively impaired?)

Face Bites, high risk exposures and other Physician Consults should also be phoned Immediately

FAX 705-725-8132 using the SMDHU Rabies & Animal Exposure Incident Report



The attending physician ultimately makes the decision to administer PEP <sup>1,2</sup>  
 Note: PEP includes/may include both rabies immunoglobulin (RIG) and rabies vaccine

**\*Contact SMDHU for release of PEP.**

**1. Management of Patients with Suspected Rabies Exposure (PHO, 2017)**

**2. Rabies Prevention and Control Protocol, 2020, Ministry of Health**

**3. Management of Potential Rabies Exposures Guideline, 2020, Ministry of Health**

**4. Medical recommendations of SMDHU Medical Officer of Health considering local conditions and consultation with Ministry of Health**  
 Additional Physician Resources at: <http://www.simcoemuskokahealth.org/JFY/PCPortal/PCPCategories/EnvironmentalHealth>