

CITY OF BRAMPTON



Pathways Master Plan:

Implementation Plan

GTA-CAC Monthly Meeting

April 30, 2010

Purpose of Presentation

1. Background of the City's Pathways Program
2. Outline the Lessons Learned
Developing Brampton's Pathways
Implementation Plan

Background

1990 P.A.C.T

Established an extensive Trail System for 7 valley systems

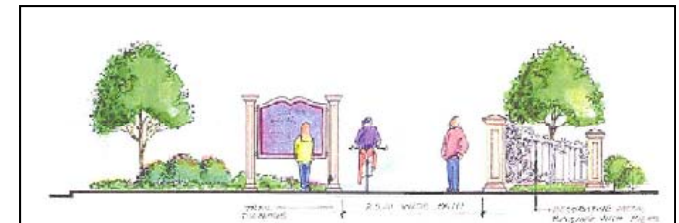
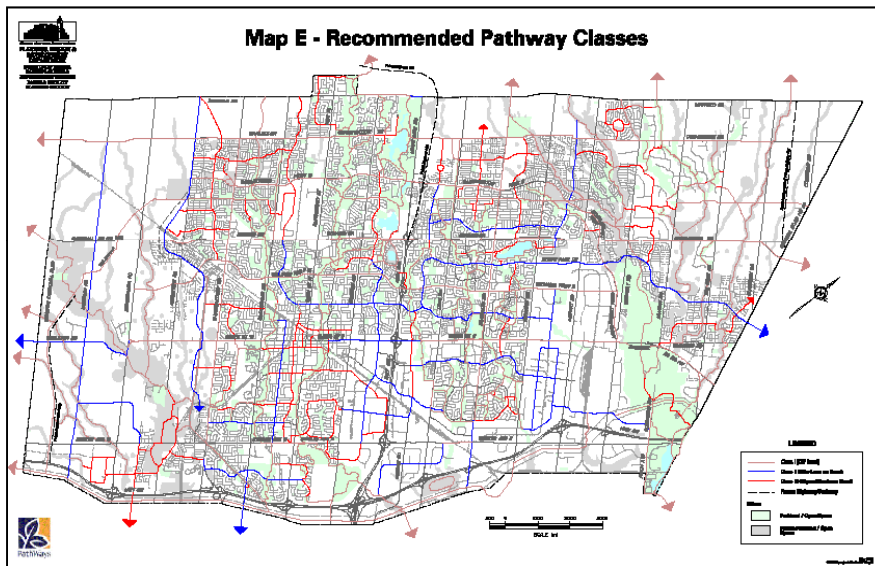
2002 Pathways Master Plan

- Promoted the expansion of the system beyond recreational paths
- Advocated for a heightened “design” of the paths system
- Enhance the City’s communication of the network
- Encouraged partnership development



2002 Pathways Master Plan

Pathways Routing Plan



Pathway Class

Proposed Pathways (km)

Class 1 – Multi Use Path	287
Class 2 – Bike Lane	106
Class 3 – Signed Route	117
Total	510

2002 Pathways Master Plan

Pathways Strategic Framework

1. Campaign for Customer Driven Pathways

- Develop safe, connected, multi-use paths
- Expand the pathways system into new communities

2. Campaign for Beautiful Pathways

- Advocated for a heightened “design” of the pathways system
- Develop sustainable pathways

3. Campaign for Valued Pathways

- Encouraged partnership development
- Enhance the City’s communication of the network

Rapid Implementation Plan

Three Demonstration Projects developed in 2003... its purpose:

- To ratify design standards and costs (capital and operational)
- Determine public acceptability
- New Community – Dixie/Bovaird Pond
- Established Community – Professors' Lake
- Bike Lane – Birchbank Drive
- Won 2003 Planning Excellence OPPI Award



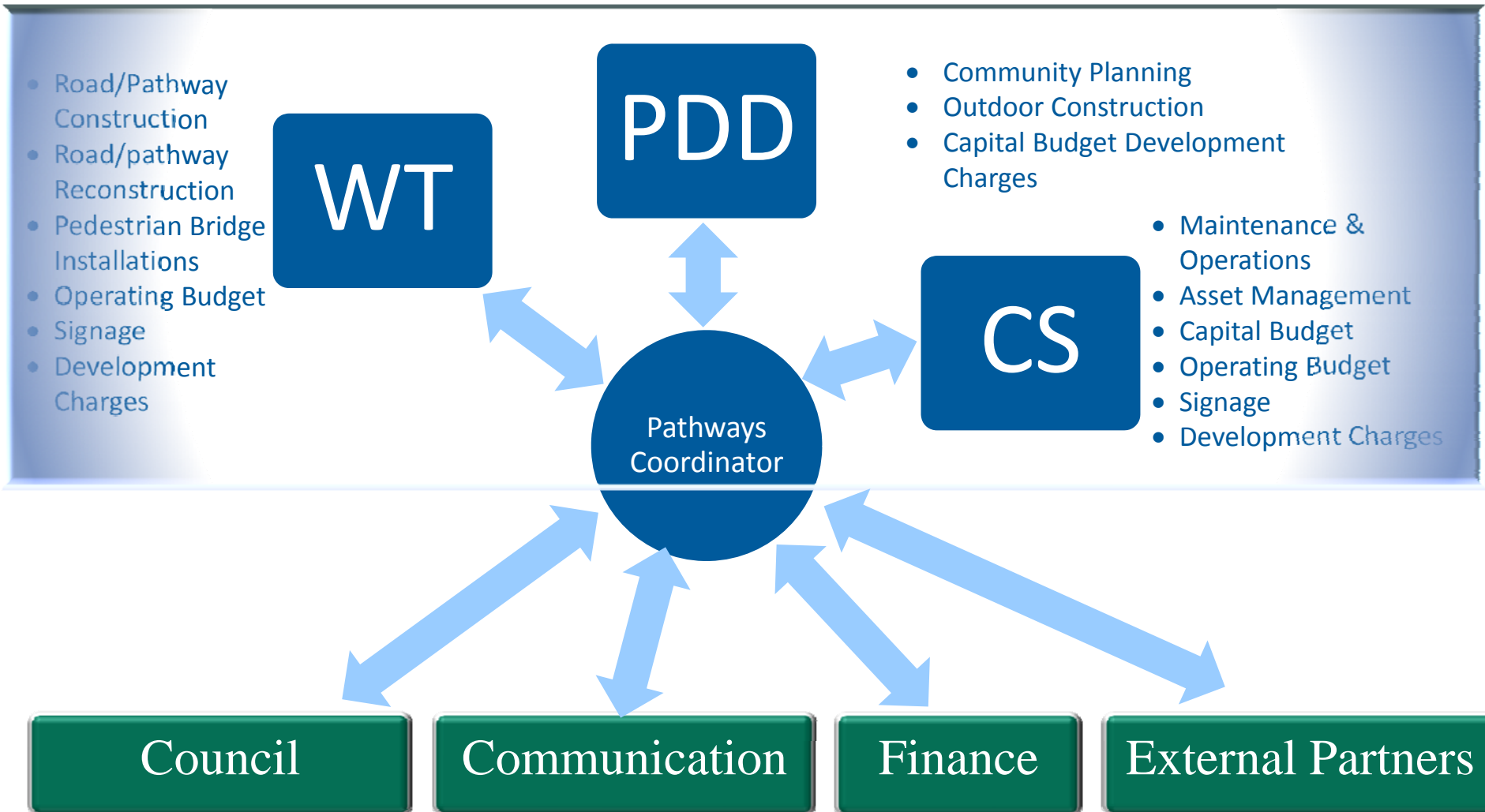
Master Plan Challenges

- **Works and Transportation did not endorse the Routing Plan**
- **No dedicated resources (capital/staff) to the MP's implementation**
- **Unclear Roles and Responsibilities**
- **No political leadership/champion**

Developing an Implementation Plan: Lessons Learned

- **Develop Interdepartmental Team with clear roles**
- **Formulate a Comprehensive Plan**
- **Consider Context**
- **Listen and Respond to Concerns**
- **Wherever possible marry Action Plans to existing programs**
- **Build Relationships**
- **Communicate**

Pathways Working Team



Formulate a Comprehensive Plan

Framework

- Vision, Principles, Goals and Objectives

Action Plan

- Short, Medium and Long Term
- Network Expansion
- Pathways Infrastructure

Funding Plan

- Capital and Maintenance

Monitoring Plan

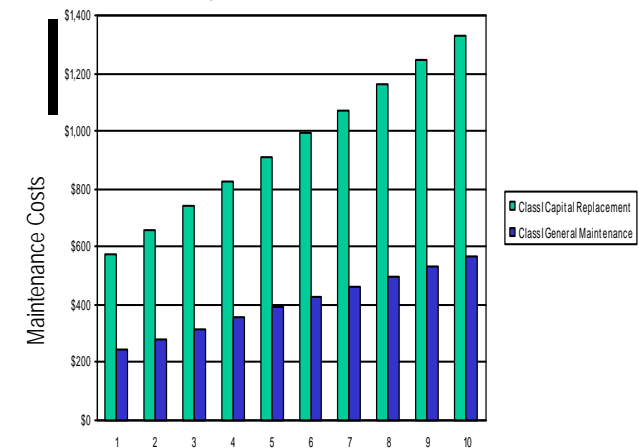
- Annual updates to Council

Communication Plan

- Mapping, web page, press releases, community outreach

ACTION PLAN			
I. Pathway Beautification Strategy			
ACTION	EXPLANATION/STATUS	DESIRED TIMELINE	PMF
Short Term Actions (1 to 2 year time span)			
Establish pathway themes for each major path/valley	Flower City initiative – create florally themed pathways	Complete	PDD/CS
Implement a demonstration project to articulate the valley theme concept	Plant 'home flower' along the Etobicoke Creek from Voodoo to Brampton Mill	2007 Q2	CS
Develop and ratify standard "Regulation" signage plan	Utilize standards from the TAC manual, including routing, share the road, stop and dismount, etc signs	2007 Q4	PDD/CSW/T
Ratify Tool Kit for pathway staging areas	List of items that would be included in the development of Special Areas including points of interest, gateways	2008	PDD/CS
Implement regulation signage plan	Initiate the process of signing all pathway classes to ensure safety	2008	CSW/T

10 Year Phasing Plan Projected Pathways Maintenance Costs



10 Year Phasing Plan

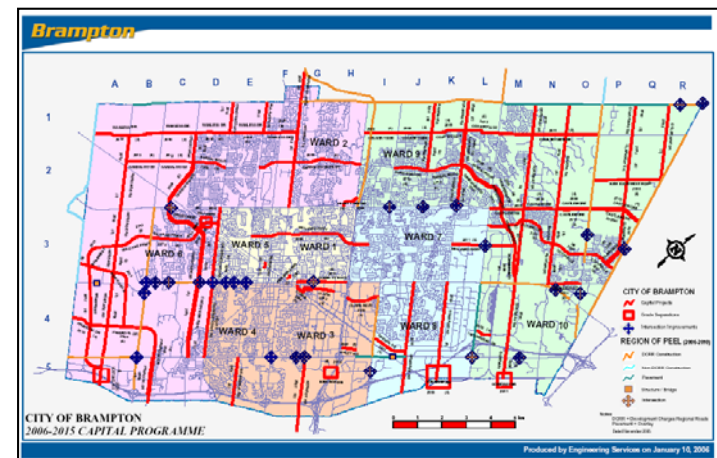
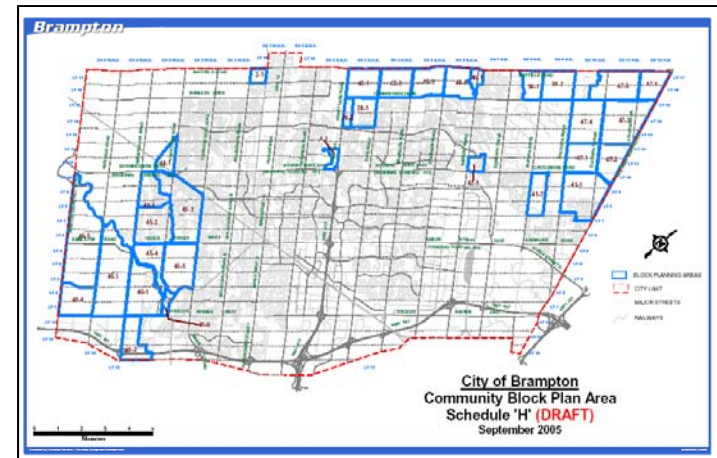
Link Action Plans to existing programs

Growth Management Plan

- Implemented through EA process related to road development

City and Regional Capital Road Projects

- Pathway requirements refined during the Block Plan approvals process



Link Action Plans to existing programs

Capital Costs – DC Eligible

- 98% of Pathway Expansion Capital Costs can be funded via Development Charges

Pathway Capital Budget Costs Estimates			
Pathway Type	Costs/ km	Funding Source/KM	
		DC's	Tax
Class 1 – Multi Use Path – Boulevard	\$75,000	Sidewalk/ Pathway DC's \$75,000	\$0
Class 1 – Multi Use Path – Valleyland	\$165,000	\$165,000	\$0
Class 2 – Bike Lane – New Development	NA	\$0	NA
Class 2 – Bike Lane – Existing Areas	\$2000 to \$30,000 *	\$0	\$2000 to \$30,000
Class 3 – Signed Route	\$1,600	\$0	\$1,600

Consider Context

Brampton

- Less than 2% of residents utilize cycling as a mode of transportation
- 80% of residents consider their car their primary mode of travel around the City
- 80% of residents rank pathways are their favourite recreational amenity
- 0 km of bike in 2005
- Over 70 km of multi-use pathways in 2006



Consider Context

2006 Revised Pathways Routing Plan

Pathway Class	2006 Revised Pathways Routing Plan (km)	2002 Pathways Routing Plan (km)
Class 1 – Multi Use Path – Boulevard	211	287
Class 1 – Multi Use Path – Valleyland	168	NA
Class 2 – Bike Lane – New Development	54	106
Class 2 – Bike Lane – Existing Areas	17	NA
Class 3 – Signed Route	60	117
Total	510	510

Listen and Respond to Concerns

Environmental Issues

One standard design for Pathways in natural heritage features which included:

- Lights
- 3 metre asphalt
- Year round maintenance



Listen and Respond to Concerns

Environmental Issues

New Hierarchy of pathways for ecologically sensitive areas

- *2.4 metre open space gravel trail with no lighting*
- *1 to 1.8 metre open space mown strip trail with no lighting*



Listen and Respond to Concerns

Lack of Standards

- Lack of Road Standard Drawings
- Inconsistent Implementation

Sandalwood and Airport
Road (2002)



Bovaird Drive
(2001)



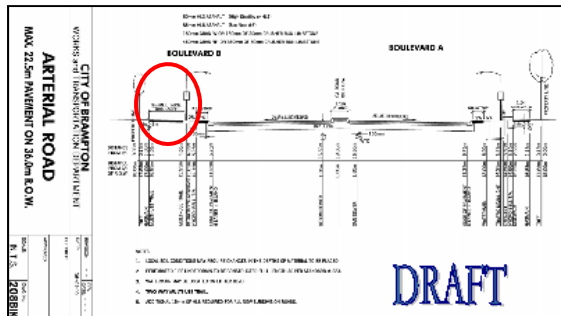
Bovaird Drive
(2007)



Listen and Respond to Concerns

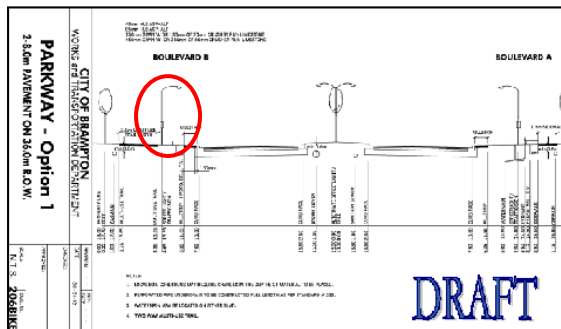
Lack of Standards Arterial Road (36m ROW)

- Class I – 3 metre multi-use trail on one side of the road (sidewalk on other)



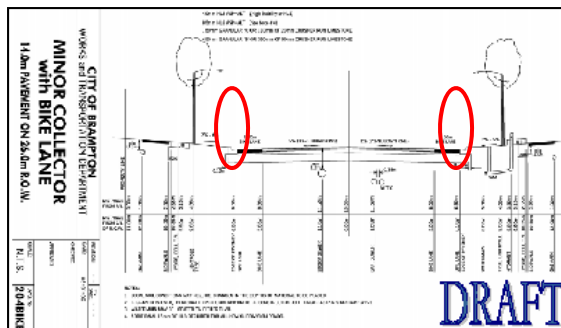
Parkway (36m ROW)

- Class I – 3 metre multi-use trail on one side of the road (sidewalk on other)



Minor Collector (26m ROW)

- Class II – Bike Lanes (two 1.5 metre lanes)



Listen and Respond to Concerns



Build Relationships

Council

- Identify champion

Region of Peel

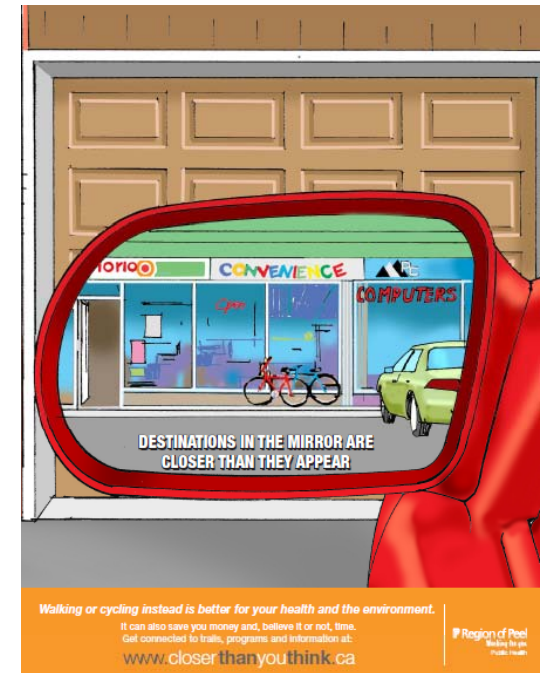
- Active Transportation Working Group
- Regional Pathways Plan
- Regional Pathways Communication Plan

City of Mississauga

- Inter-municipal connections

Toronto Region Conservation Authority

- Pathways through Conservation Lands



Communicate

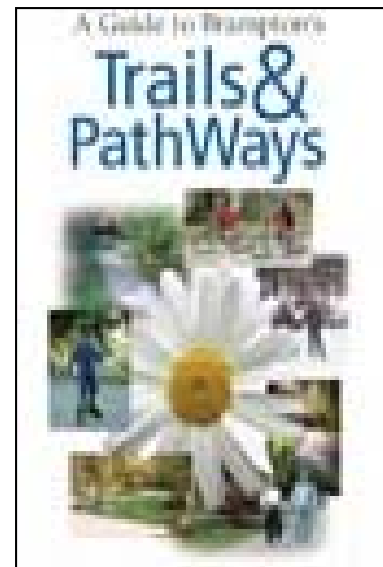
Web Page

Pocket Book

Council Reports

Press Releases

Signage



Successes Since 2006

- ✓ Annually adding 8 km of new trails or about 32 km
- ✓ Added over 5 km of bike lanes
- ✓ All new communities planned with bike lanes
- ✓ 1000 Pathway Wayfinding Signs developed and Installed
- ✓ Planned and are designing 4 major Trail connections into neighbouring Municipalities (Mississauga, Caledon, Toronto, Vaughn)

Remaining Challenges

- **Still Lack of dedicated staff resources and Capital program**
- **No comprehensive Community Outreach program**
- **No strategy to closing gaps in existing network**
- **Weak Official policies for “Supporting” infrastructure**

Ingredients of a Successful Pathways Implementation Plan

- **Develop Interdepartmental Team with clear roles**
- **Comprehensive Implementation Plan**
- **A Plan that is particular to its place**
- **Action Plans integrated with existing programs**
- **Listen and Respond to Concerns**
- **Build Relationships**
- **Communicate**

Thank You

Michael Hoy

Environmental Policy Planner

Planning, Design and Development Department

City of Brampton

(905) 874-2608

michael.hoy@brampton.ca