



TABLE OF CONTENTS

| | |
|--|---|
| INTRODUCTION TO HEALTHY GROWTH AND DEVELOPMENT SCREENING | 2 |
| SCREENING IN THE COMMUNITY..... | 3 |
| EARLY INTERVENTION SERVICES REFERRAL INFORMATION | 3 |
| EARLY INTERVENTION SERVICES REFERRAL MAPS..... | 4 |

INTRODUCTION TO HEALTHY GROWTH AND DEVELOPMENT SCREENING

Developmental Milestones

As children grow, we expect them to learn new things at various ages. For example, by 18 months of age, a child is usually able to say 20 or more words. This is called a "developmental milestone".

One very simple way to check that children are meeting their developmental milestones is by using a series of questionnaires called "Nipissing District Developmental Screen (NDDS)" or "Nipissing Screen" for short. Completing a Nipissing Screen with a parent is highly recommended or encouraging then to visit www.endds.com to receive these electronically will help both parents and childcare centers to follow their child's development. The Nipissing Screens also have a list of activities that parents and caregivers can do with their children that are appropriate for the age of their child. The Nipissing Screens were last updated in 2011. Copies of these can be obtained and can be accessed from www.endds.com, www.ndds.com, www.18monthvisit.ca or www.simcoemuskokahealth.org.

The Nipissing Screen set of checklists is easy to use. It looks at 13 key developmental stages between infancy and six years of age.

The stages are: one and two months, four months, six months, nine months, 12 months, 15 months, 18 months, two years, 30 months, three years, four years, five years and six years.

Nipissing screens explore a child's skills in the following areas:

- Vision
- Hearing
- Speech
- Language
- Communication
- Gross Motor
- Fine Motor
- Cognitive
- Social/Emotional
- Self-Help

A parent simply answers Yes or No to questions about their child's abilities at a certain age. Always advise parents to talk to their healthcare or childcare professional if there are any questions about their child's development or well-being.

SCREENING IN THE COMMUNITY

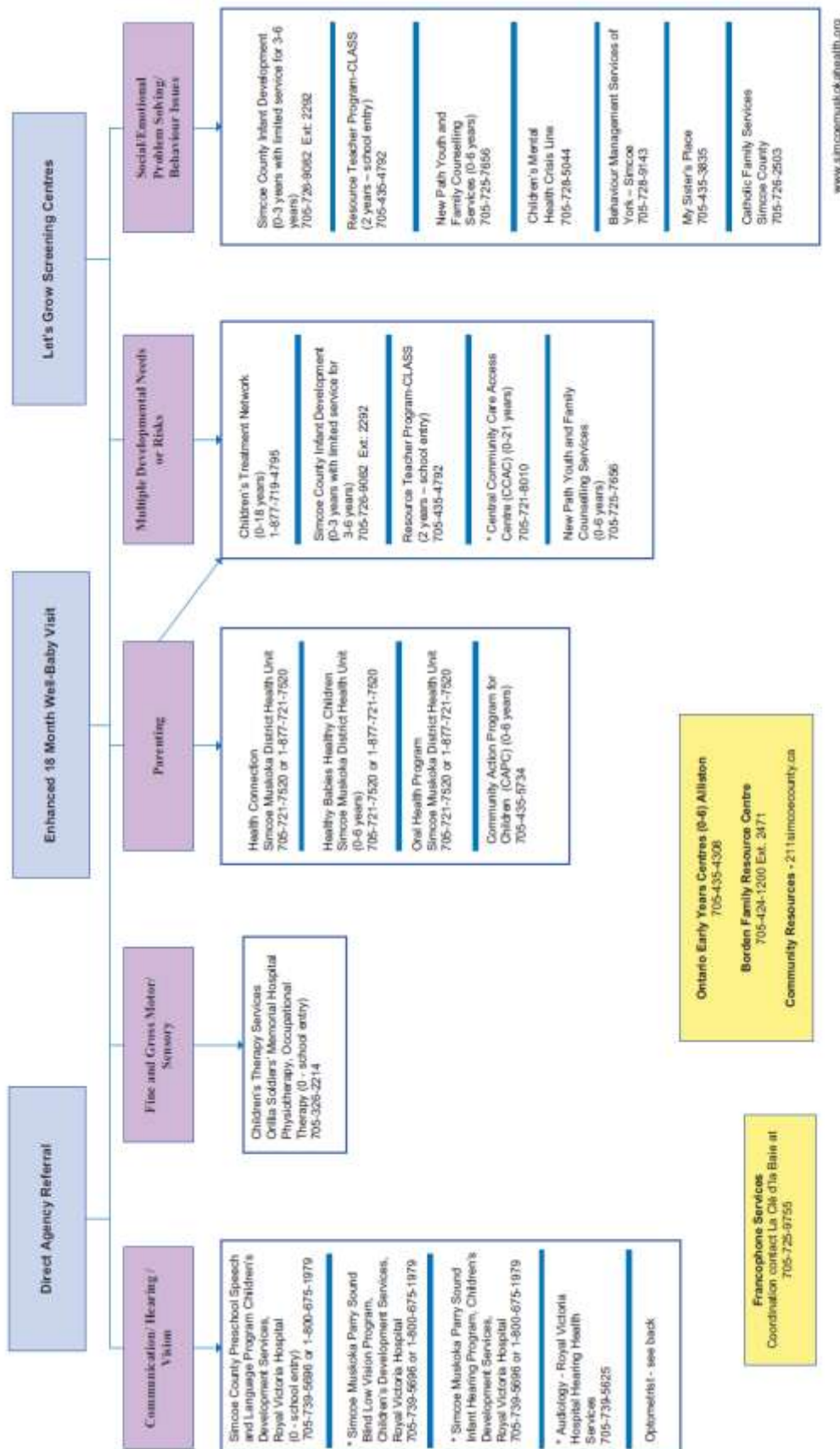
Eighteen months is a milestone in a child's development and a visit to a family physician or other health care provider at this time is important. Ontario has recognized the importance of the 18-month well-baby visit by funding a longer, more in-depth visit.

The overall goal of this new initiative is to better support the healthy development and well-being of Ontario's children. What it means for parents and children is an opportunity to have a more detailed discussion about their child with their family physician or other health care provider. More information can be found at www.simcoemuskokahealth.org or www.18monthvisit.ca.

EARLY INTERVENTION SERVICES REFERRAL INFORMATION

You may also refer to the Early Intervention Services Referral Information for your area (see below), as a guide to talk to parents about obtaining services for their child, parents can self-refer to any service and/or speak to their family doctor for referral support. All referrals to these services can be made by parents or through childcare centers with parental consent. In situations where multiple referrals would be appropriate or parent support is indicated, please consider referral to the Infant Development Program or Resource Teacher Program in your area.

Early Intervention Services Referral Information/Alliston



* Physician referral required
Refer to the Children's Aid Society of the County of Simcoe (CAS) if child protection issues are present or disclosed 705-728-6597.

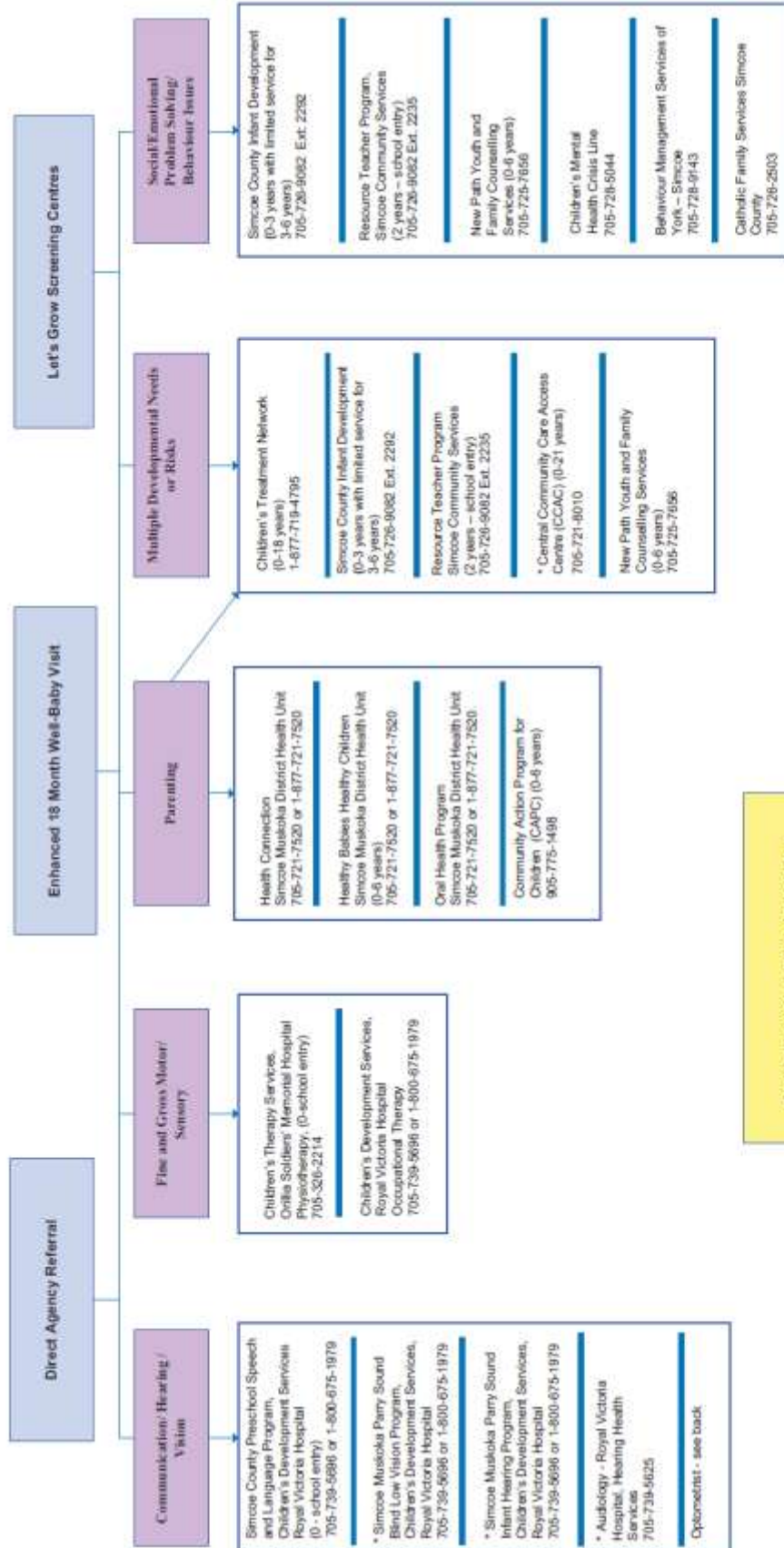
www.simcoemuskokahealth.org

Early Intervention Services Referral/Alliston

| AGENCY/SERVICE | DESCRIPTION OF SERVICE |
|---|--|
| Audiology | Hearing assessment (all ages). |
| Behaviour Management Services of York-Simcoe | Provides behavioural service to individuals who have a developmental disability with a significant cognitive delay. |
| Catholic Family Services Simcoe County | Counseling for individuals, couples and families for marital issues, child management concerns, family breakdown, and stress. Fees geared to income. |
| Children's Aid Society | Investigation of child welfare concerns or risk of concerns, protection. |
| Children's Mental Health Crisis Line | Children and their parents, immediate telephone response to deescalate crisis, may visit to site of crisis and/or provide follow up services. |
| Children's Therapy Services Orilia Soldiers' Memorial Hospital Occupational Therapy, Physiotherapy | Infants and preschoolers with developmental concerns and/or at risk populations. Assessment, treatment and consultation. Specialized clinics, public awareness, prevention and early identification activities. |
| Children's Treatment Network | Serving Simcoe County and York Region for children from birth to age 18 with multiple disabilities. Links Health care, education, recreation, social and community services. |
| Central Community Care Access Centre (CCAC) | For children with medical and/or medically complex needs. Services also provided to 3- 4yr old children with rehabilitative and/or sensory needs entering the school system onwards. |
| Community Action Program for Children (CAPC) | Teen/young parent support. Low income families. Food and Nutrition supports. Variety of free programs and supports for parents and their children. |
| Oral Health Simcoe Muskoka District Health Unit | Children In Need of Treatment (CINOT) ext: 8804. Urgent dental concerns for children 0 to 18 years. Healthy Smiles Ontario (HSO) ext: 8810. Preventative services, based on family income. Other inquiries via general number. |
| Healthy Babies Healthy Children Program Simcoe Muskoka District Health Unit | Home visits with a Public Health Nurse and Family Home Visitors for parenting support, service coordination, and linking to community resources. Intake line to all health unit services. |
| Health Connection Simcoe Muskoka District Health Unit | Health information, support and referrals to community resources from a Public Health Nurse. Information also available via internet and e-mail at www.simcohealth.org . Intake line to all health unit services. |
| Simcoe County Infant Development Program Simcoe Community Services | Serving infants in Simcoe County. Home visiting, developmental assessment, service coordination. |
| My Sister's Place Women's Shelter | Offers crisis counselling, emergency transportation support, referrals to other community services, and legal and housing support to abused women and children. Crisis Line: 1-800-461-5419 |
| New Path Youth and Family Counselling Services | Social-emotional and/or behavioural concerns. In-home service provided to parents and children. Parenting programs and social skills group programs for children. |
| Optometrist | Recommended children should have their vision checked at 6 months, 3 years and annually. The cost is covered by OHIP for children under 19 years of age and parents can self refer. |
| Ontario Early Years Centres | Provide parents with information, education & resources to support them in their parenting role. Offers a variety of age appropriate learning opportunities for children 0-6. All programs provided are free. |
| Resource Teacher Program Community Living Association South Simcoe (CLASS) | Developmental concerns/behavioural/at risk. Support to children in inclusive preschool programs. Individual work with parent(s) and children. |
| Simcoe County Preschool Speech and Language Program Children's Development Services Royal Victoria Hospital | Infants and preschoolers with developmental concerns and/or at risk populations. Assessment, treatment and consultation. Specialized clinics; public awareness, prevention, early identification and education activities. |
| Simcoe Muskoka Parry Sound Blind Low Vision Program Children's Development Services Royal Victoria Hospital | Program provides assessment and intervention services through an Early Childhood Vision Consultant for infants and preschool children who are Blind or Low Vision as diagnosed by an ophthalmologist. |
| Simcoe Muskoka Parry Sound Infant Hearing Program, Children's Development Services-Royal Victoria Hospital | The Simcoe Muskoka Parry Sound Infant Hearing Program provides Universal Newborn Hearing Screening, specialized infant audiological assessment, high risk monitoring, communication development services and brief family support for those who meet the eligibility criteria. |
| www.211simcoecounty.ca | A searchable database providing easy access to community, social, health, and related government services in Simcoe County. |

Adapted from Simcoe County Services for Early Identification and Treatment of Children 0-6 yrs by Early Identification and Education Committee, March 2005. Updated and Revised 2011

Early Intervention Services Referral Information/Bradford



Ontario Early Years Centres (0-6) Bradford
905-775-3039 Ext. 229
Community Resources - 211simcoecounty.ca

Francophone Services
Coordination contact La Cite d'la Belle et
705-725-6755

www.simcoemuskokahealth.org

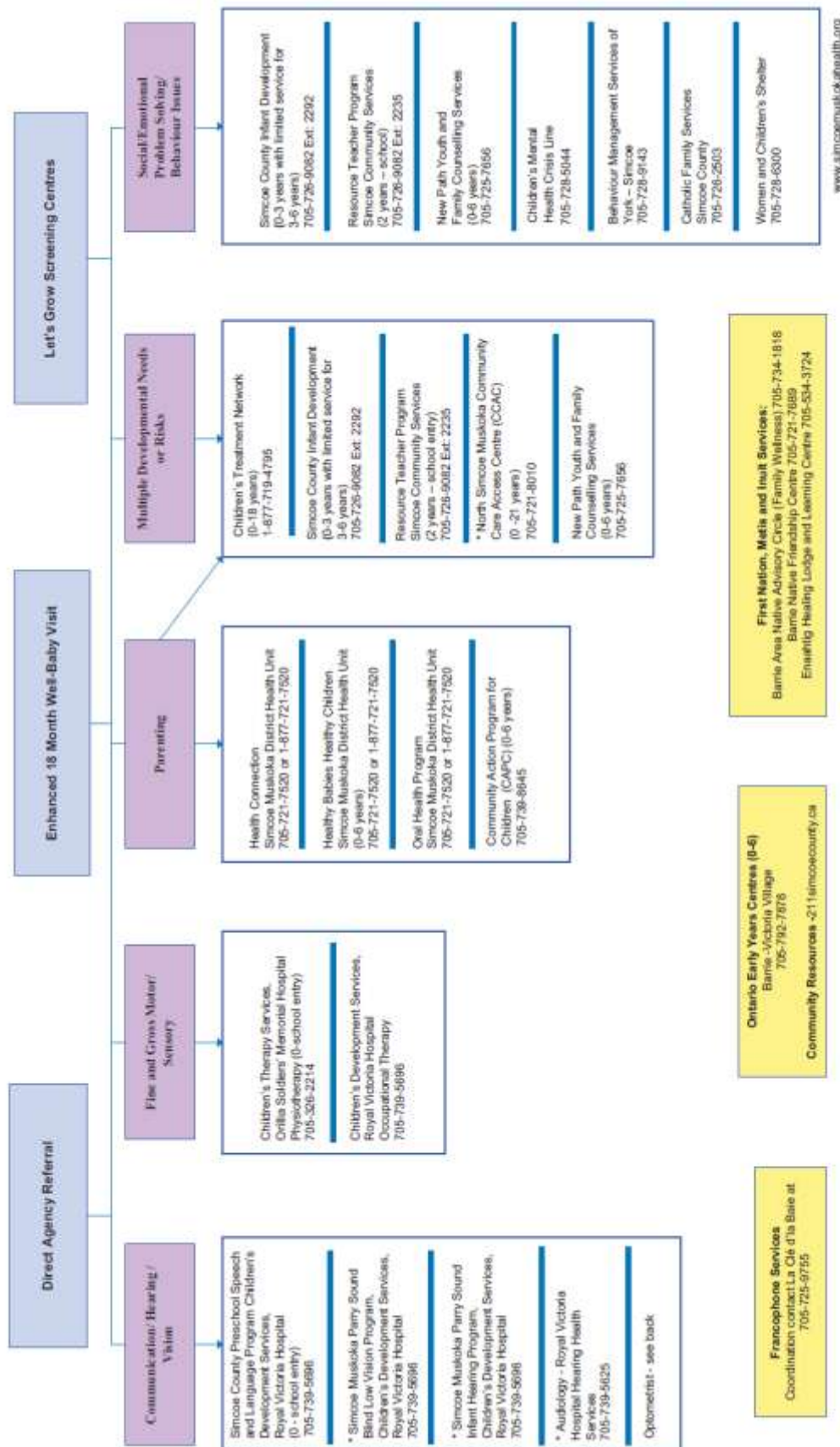
* Physician referral required.
Refer to the Children's Aid Society of the County of Simcoe (CAS) if child protection issues are present or disclosed 705-726-6687.

Early Intervention Services Referral/Bradford

| AGENCY/SERVICE | DESCRIPTION OF SERVICE |
|---|--|
| Audiology | Hearing assessment (all ages). |
| Behaviour Management Services of York-Simcoe | Provides behavioural service to individuals who have a developmental disability with a significant cognitive delay |
| Catholic Family Services Simcoe County | Counselling for individuals, couples, and families for marital issues, child management concerns, family breakdown and stress. Fees geared to income. |
| Children's Aid Society | Investigation of child welfare concerns or risk of concerns, protection. |
| Children's Mental Health Crisis Line | Children and their parents, immediate telephone response to deescalate crisis, may visit to site of crisis and/or provide follow up services |
| Children's Development Services Royal Victoria Hospital | Infants and preschoolers with developmental concerns and/or at risk populations. Assessment, treatment and consultation. Specialized clinics, public awareness, prevention and early identification activities. |
| Occupational Therapy Children's Therapy Services Orillia Soldiers' Memorial Hospital | Infants and preschoolers with developmental concerns and/or at risk populations. Assessment, treatment and consultation. Specialized clinics, public awareness, prevention and early identification activities. |
| Physiotherapy | |
| Children's Treatment Network | Serving Simcoe County and York Region for children from birth to age 18 with multiple disabilities. Links Health care, education, recreation, social and community services through one point of contact for a single coordinated plan of care. |
| Central Community Care Access Centre (CCAC) | Services cover children from birth to 21 years, with medical and/or medically complex needs. Services also provided to 3-4yr old children with rehabilitative and/or sensory needs entering the school system onwards. |
| Community Action Program for Children (CAPC) | Teen/young parent support. Low income families. Food and Nutrition supports. Variety of free programs and supports for parents and their children. |
| Oral Health Simcoe Muskoka District Health Unit | Children In Need of Treatment (CINOT) ext: 8804. Urgent dental concerns for children 0 to 18 th birthday years. Healthy Smiles Ontario (HSO) ext: 8810. Preventative services, based on family income. Other inquiries via general number. |
| Healthy Babies Healthy Children Program Simcoe Muskoka District Health Unit | Home visits with a Public Health Nurse and Family Home Visitors for parenting support, service coordination, and linking to community resources. Intake line to all health unit services. |
| Health Connection Simcoe Muskoka District Health Unit | Health information, support and referrals to community resources from a Public Health Nurse. Information also available via internet and e-mail at www.simcoehealth.org . Intake line for all health unit services. |
| New Path Youth and Family Counselling Services | Social-emotional and/or behavioural concerns. In-home service provided to parents and children. Parenting programs and social skills group programs for children. |
| Optometrist | Recommended children should have their vision checked at 6 months, 3 years and yearly. The cost is covered by OHIP until 19 years of age and parents can self refer. |
| Ontario Early Years' Centre | Provide parents with information, education & resources to support them in their parenting role. Offers a variety of age appropriate learning opportunities for children 0-6. All programs provided are free. |
| Resource Teacher Program Simcoe Community Services | Developmental concerns/behavioural/at risk. Support to children in inclusive preschool programs. Individual work with parent(s) and children. |
| Simcoe County Infant Development Simcoe Community Services | Serving infants in Simcoe County. Home visiting, developmental assessment, service coordination. |
| Simcoe County Preschool Speech and Language Program Children's Development Services Royal Victoria Hospital | Infants and preschoolers with developmental concerns and/or at risk populations. Assessment, treatment and consultation. Specialized clinics; public awareness, prevention, early identification and education activities. |
| Simcoe Muskoka Parry Sound Infant Hearing Program, Children's Development Services-Royal Victoria Hospital | The Simcoe Muskoka Parry Sound Infant Hearing Program provides Universal Newborn Hearing Screening, specialized infant audiological assessment, high risk monitoring, communication development services and brief family support for those who meet the eligibility criteria. |
| Simcoe Muskoka Parry Sound Blind Low Vision Program Children's Development Services Royal Victoria Hospital | Program provides assessment and intervention services through an Early Childhood Vision Consultant for infants and preschool children who are Blind or Low Vision as diagnosed by an ophthalmologist. |
| www.211simcoecounty.ca | A searchable database providing easy access to community, social, health, and related government services in Simcoe County. |

Adapted from Simcoe County Services for Early Identification and Treatment of Children 0-6 yrs by Early Identification and Education Committee, March, 2005. Updated and Revised 2011

Early Intervention Services Referral Information/Barrie

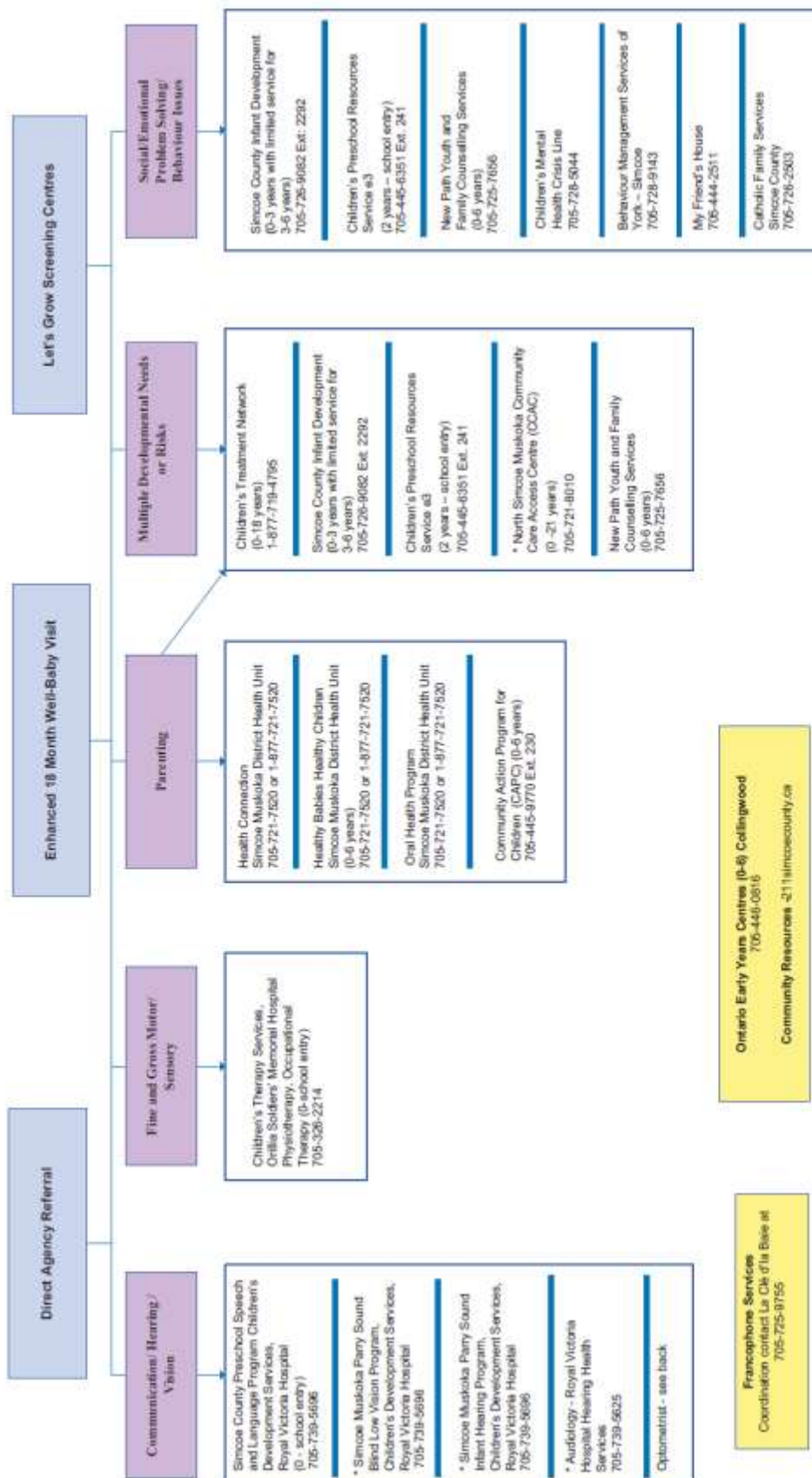


* Physician referral required.
Refer to the Children's Aid Society of the County of Simcoe (CAS) if child protection issues are present or disclosed 705-726-6687.

Early Intervention Services Referral/Barrie

| AGENCY/SERVICE | DESCRIPTION OF SERVICE |
|--|--|
| Audiology | Hearing assessment (all ages). |
| Behaviour Management Services of York-Simcoe | Provides behavioural service to individuals who have a developmental disability with a significant cognitive delay. |
| Barrie Native Friendship Centre (AHBHC and Aboriginal Family Support) | Programming meets the needs of the First Nation, Metis and Inuit community through culturally based programs. Develop and enhance healthy social skills, motor skills and cognitive development. Address the physical, mental, emotional and spiritual well being of individuals, families and communities. |
| Barrie Area Native Advisory Circle (Family Wellness) | Beebminot Family Healing and Wellness program assists families in reducing poverty through education, skill development and personal growth activities. These are culturally based services which also include parent resourcing and Parent Circles in partnership with the Binoojinsauk Child Care Centres. |
| Catholic Family Services Simcoe County | Counselling for individuals, couples and families for marital issues, child management concerns, family breakdown, and stress. Fees geared to income. |
| Children's Aid Society | Investigation of child welfare concerns or risk of concerns, protection, 0 - 16 yrs. |
| Children's Mental Health Crisis Line | Children and their parents, immediate telephone response to deescalate crisis, may visit to site of crisis and/or provide follow up services |
| Children's Development Services Royal Victoria Hospital Occupational Therapy | Infants and preschoolers with developmental concerns and/or at risk populations. Assessment, treatment and consultation. Specialized clinics, public awareness, prevention and early identification activities. |
| Children's Treatment Network | Serving Simcoe County and York Region for children with multiple disabilities. Links Health care, education, recreation, social and community services through one point of contact for a single coordinated plan of care. |
| Children's Therapy Services Orillia Soldiers' Memorial Hospital Physiotherapy | Infants and preschoolers with developmental concerns and/or at risk populations. Assessment, treatment and consultation. Specialized clinics, public awareness, prevention and early identification activities. |
| North Simcoe Muskoka Community Care Access Centre (CCAC) | For children with medical and/or medically complex needs. Services also provided to 3- 4yr old children with rehabilitative and/or sensory needs entering the school system onwards. |
| Community Action Program for Children (CAPC) | Teen/young parent support. Low income families. Food and Nutrition supports. Variety of free programs and supports for parents and their children. |
| Enaahsig Healing Lodge and Learning Centre | Offers day and residential program to persons of Aboriginal ancestry. Program to support individuals in a traditional and holistic manner. Day programs include counselling services, youth groups, crafting circles, seasonal ceremonies and traditional teachings. |
| Oral Health Program Simcoe Muskoka District Health Unit | Children In Need of Treatment (CINOT) ext: 8804. Urgent dental concerns for children 0 to 18 th birthday years. Healthy Smiles Ontario (HSO) ext: 8810. Preventative services, based on family income. Other inquiries via general number. |
| Healthy Babies Healthy Children Program Simcoe Muskoka District Health Unit | Home visits with a Public Health Nurse and Family Home Visitors for parenting support, service coordination, and linking to community resources. Intake line to all health unit services. |
| Health Connection Simcoe Muskoka District Health Unit | Health information, support and referrals to community resources from a Public Health Nurse. Information also available via internet and e-mail at www.simcoehealth.org Intake line to all health unit services. |
| Simcoe County Infant Development Simcoe Community Services | Serving infants in Simcoe County. Home visiting, developmental assessment, service coordination. |
| New Path Youth and Family Counselling Services | Social-emotional and/or behavioural concerns. In-home service provided to parents and children. Parenting programs and social skills group programs for children. |
| Ontario Early Years Centre | Provide parents with information, education & resources to support them in their parenting role. Offers a variety of age appropriate learning opportunities for children 0-6. All programs provided are free. |
| Simcoe County Preschool Speech and Language Program Children's Development Services Royal Victoria Hospital | Infants and preschoolers with developmental concerns and/or at risk populations. Assessment, treatment and consultation. Specialized clinics; public awareness, prevention, early identification and education activities. |
| Resource Teacher Program Simcoe Community Services | Developmental concerns/behaviour/at risk. Support to children in inclusive preschool programs. Individual work with parent(s) and children. |
| Optometrist | Recommended children should have their vision checked at 6 months, 3 years and yearly. The cost is covered by OHIP until age 19 years and parents can self refer. |
| Simcoe Muskoka Parry Sound Blind Low Vision Early Intervention Program Children's Development Services Royal Victoria Hospital | Program provides assessment and intervention services through an Early Childhood Vision Consultant for infants and preschool children who are Blind or Low Vision as diagnosed by an ophthalmologist. |
| Simcoe Muskoka Parry Sound Infant Hearing Program, Children's Development Services-Royal Victoria Hospital | The Simcoe Muskoka Parry Sound Infant Hearing Program provides Universal Newborn Hearing Screening, specialized infant audiological assessment, high risk monitoring, communication development services and brief family support for those who meet the eligibility criteria. |
| Women and Children's Shelter | Offers crisis counselling, emergency transportation support, referrals to other community services, and legal and housing support to abused women and children. Shelter: 705-728-6300 * Outreach Services: 705 721-9977 Crisis 1-800-461-1716 |
| www.211simcoecounty.ca | A searchable database providing easy access to community, social, health, and related government services in Simcoe County. |

Early Intervention Services Referral Information/Collingwood



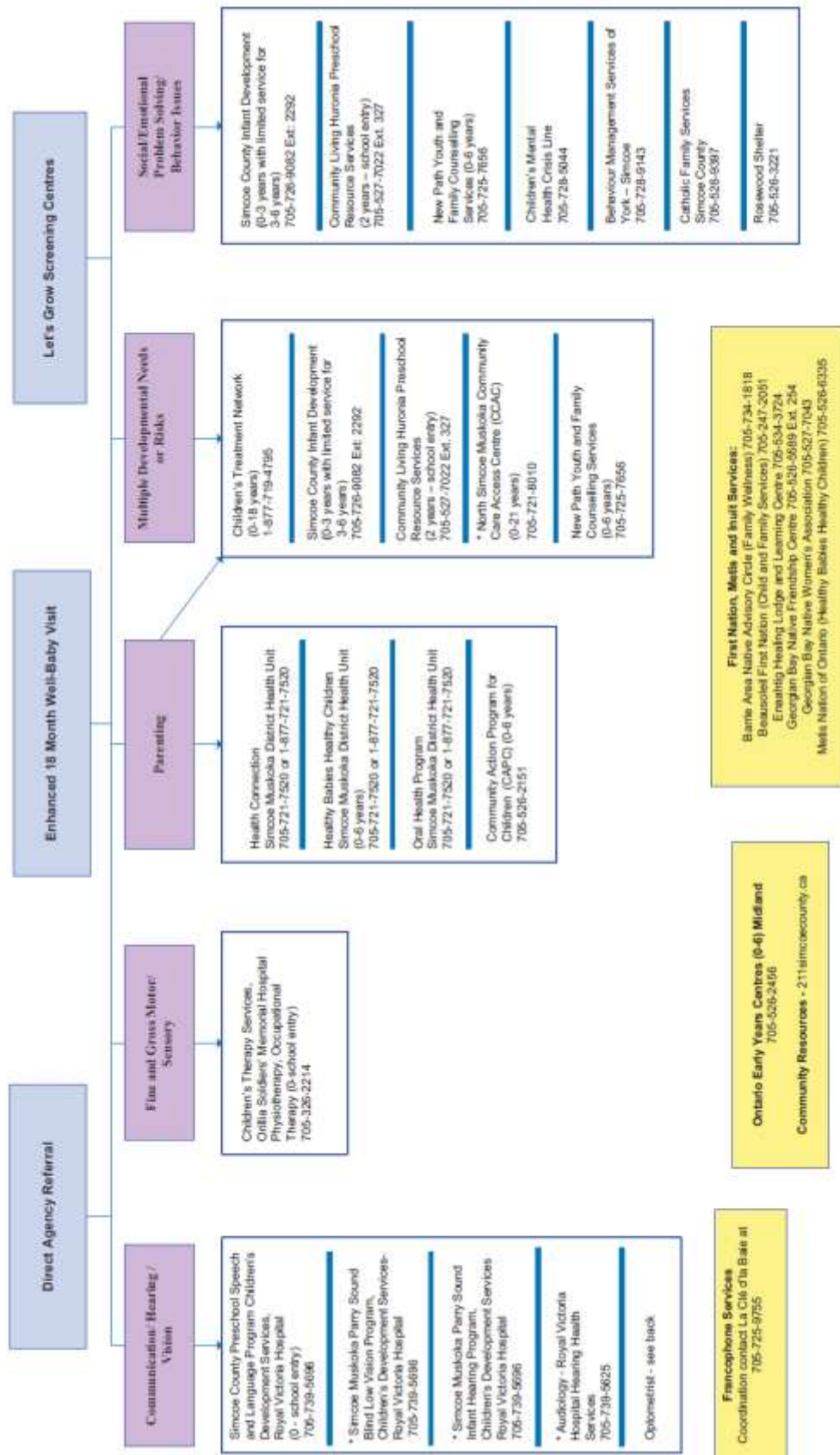
* Physician referral required.
Refer to the Children's Aid Society of the County of Simcoe (CAS) if child protection issues are present or disclosed 705-726-6587.

Early Intervention Services Referral/Collingwood

| AGENCY/SERVICE | DESCRIPTION OF SERVICE |
|---|--|
| Audiology | Hearing assessment (all ages). |
| Behaviour Management Services of York-Simcoe | Provides behavioural service to individuals who have a developmental disability with a significant cognitive delay. |
| Catholic Family Services Simcoe County | Counselling for individuals, couples and families for marital issues, child management concerns, family breakdown, stress, fees geared to income. |
| Children's Aid Society | Investigation of child welfare concerns or risk of concerns, protection. |
| Children's Mental Health Crisis Line | Children and their parents, immediate telephone response to deescalate crisis, may visit to site of crisis and/or provide follow up services. |
| Children's Therapy Services/Ontario Soldiers' Memorial Hospital Occupational Therapy, Physiotherapy | Infants and preschoolers with developmental concerns and/or at risk populations. Assessment, treatment and consultation. Specialized clinics, public awareness, prevention and early identification activities. |
| Children's Treatment Network | Serving Simcoe County and York Region for children from birth to age 18 with multiple disabilities. Links Health care, education, recreation, social and community services. |
| North Simcoe Muskoka Community Care Access Centre (CCAC) | For children with medical and/or medically complex needs. Services also provided to 3- 4yr old children with rehabilitative and/or sensory needs entering the school system onwards. |
| Community Action Program for Children (CAPC) | Teen /young parent support. Low income families. Food and Nutrition supports. Variety of free programs and supports for parents and their children. |
| Community Services Children's Preschool Resource Service – e3 | 18 months to school entry with developmental concerns and behaviour at risk; support to children in inclusive child care program, service coordination, individual work with parents and children. |
| Oral Health Simcoe Muskoka District Health Unit | Children In Need of Treatment (CINOT) ext: 8804. Urgent dental concerns for children 0 to 18 th birthday years. Healthy Smiles Ontario (HSO) ext: 8810. Preventative services, based on family income. Other inquiries via general number. |
| Healthy Babies Healthy Children Program Simcoe Muskoka District Health Unit | Home visits with a Public Health Nurse and Family Home Visitors for parenting support, service coordination, and linking to community resources. Intake line to all health unit services. |
| Health Connection Simcoe Muskoka District Health Unit | Health information, support and referrals to community resources from a Public Health Nurse. Information also available via internet and e-mail at www.simcoehealth.org . Intake line for all health unit services. |
| Simcoe County Infant Development Simcoe Community Services | Serving infants in Simcoe County. Home visiting, developmental assessment, service coordination. |
| My Friend's House | One to one counselling and group counseling for women affected by emotional and physical violence; emergency shelter, 24 hour crisis line. |
| New Path Youth and Family Counselling Services | Social-emotional and/or behavioural concerns. In-home service provided to parents and children. Parenting programs and social skills group programs for children. |
| Ontario Early Years Centre | Provide parents with information, education & resources to support them in their parenting role. Offer a variety of age appropriate learning opportunities for children 0-6. All programs provided are free. |
| Optometrist | Recommended children should have their vision checked at 6 months, 3 years and annually. The cost is covered by OHIP until age 19 and parents can self refer. |
| Simcoe County Preschool Speech and Language Program Children's Development Services Royal Victoria Hospital | Infants and preschoolers with developmental concerns and/or at risk populations. Assessment, treatment and consultation. Specialized clinics; public awareness, prevention, early identification and education activities. |
| Simcoe Muskoka Parry Sound Blind Low Vision Program Children's Development Services Royal Victoria Hospital | Program provides assessment and intervention services through an Early Childhood Vision Consultant for infants and preschool children who are Blind or Low Vision as diagnosed by an ophthalmologist. |
| Simcoe Muskoka Parry Sound Infant Hearing Program, Children's Development Services-Royal Victoria Hospital | The Simcoe Muskoka Parry Sound Infant Hearing Program provides Universal Newborn Hearing Screening, specialized infant audiological assessment, high risk monitoring, communication development services and brief family support for those who meet the eligibility criteria. |
| www.211simcoecounty.ca | A searchable database providing easy access to community, social, health, and related government services in Simcoe County. |

Adapted from Simcoe County Services for Early Identification and Treatment of Children 0-6 yrs by Early Identification and Education Committee, March 2005, Updated and Revised 2011

Early Intervention Services Referral Information/Midland



* Physician referral required.
Refer to the Children's Aid Society of the County of Simcoe (CAS) if child protection issues are present or disclosed 705-725-6967.

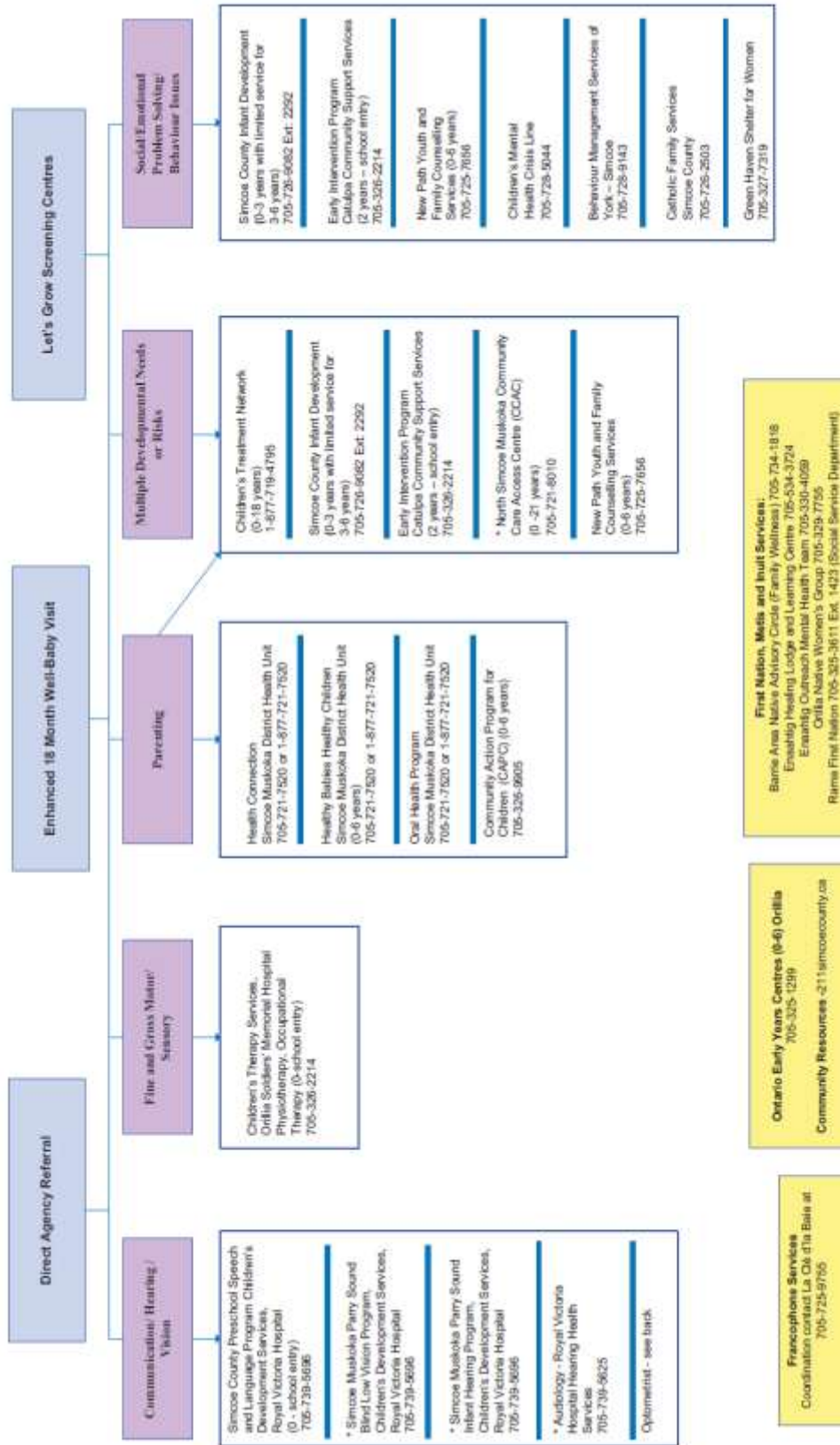
www.simcocoounty.ca/health.org

Early Intervention Services Referral/Midland

| AGENCY/SERVICE | DESCRIPTION OF SERVICE |
|---|---|
| Audiology | Hearing assessment (all ages). |
| Barrie Area Native Advisory Circle | Beebminot Family Healing and Wellness program assists families in reducing poverty through education, skill development and personal growth activities. These are Cultural base services which also include parent resourcing and Parent Circles in partnership with the Binoojinsauk Child Care Centres. |
| Behaviour Management Services of York-Simcoe | Provides behavioural service to individuals who have a developmental disability with a significant cognitive delay. |
| Beausoleil First Nation (Child and Family Services) | Services for those who are members of Beausoleil living on reserve. |
| Catholic Family Services Simcoe County | Counselling for individuals, couples, and families for marital issues, child management concerns, family breakdown, and stress. Fees geared to income. |
| Children's Aid Society | Investigation of child welfare concerns or risk of concerns, protection. |
| Children's Mental Health Crisis Line | Children and their parents, immediate telephone response to deescalate crisis, may visit to site of crisis and/or provide follow up services. |
| Children's Therapy Services/Ontario Soldiers' Memorial Hospital, Occupational Therapy, Physiotherapy | Infants and preschoolers with developmental concerns and/or at risk populations. Assessment, treatment and consultation. Specialized clinics, public awareness, prevention and early identification activities. |
| Children's Treatment Network | Serving Simcoe County and York Region for children from birth to age 18 with multiple disabilities. Links health care, education, recreation, social and community services through one point of contact for a single coordinated plan of care. |
| North Simcoe Muskoka Community Care Access Centre (CCAC) | For children with medical and/or medically complex needs. Services also provided to 3-4yr old children with rehabilitative and/or sensory needs entering the school system onwards. |
| Community Action Program for Children (CAPC) | Teen/young parent support, Low income families, Food and nutrition supports. Variety of free programs and supports for parents and their children. |
| Community Living Huronia Preschool Resource Services | 2 years to school entry; developmental concerns/behavioural risk children. Individual work with parent(s) and children. Service coordination also provided. |
| Enaahitig Healing Lodge and Learning Centre: | Offers day and residential program to persons of Aboriginal ancestry. Program to support individuals in a traditional and holistic manner. Day programs include counselling services, youth groups, crafting circles, seasonal ceremonies and traditional teachings. |
| Georgian Bay Native Friendship Centre | Meets the needs of FNMI community through culturally based programs. Addresses the physical, mental, emotional and spiritual well being of individuals, families and communities. |
| Georgian Bay Native Women's Association | Meet the needs of FNMI women, children and families. Cultural based holistic programming including CAP-C, Prenatal Nutrition Program, parent support circles, traditional parenting and promotion of family wellness. |
| Oral Health Simcoe Muskoka District Health Unit | Children In Need of Treatment (CINOT) ext: 8804. Urgent dental concerns for children 0 to 18 th birthday years. Healthy Smiles Ontario (HSO) ext: 8810. Preventative services, based on family income. Other inquiries via general number. |
| Healthy Babies Healthy Children Program Simcoe Muskoka District Health Unit | Home visits with a Public Health Nurse and Family Home Visitors for parenting support, service coordination, and linking to community resources. |
| Health Connection Simcoe Muskoka District Health Unit | Health information, support and referrals to community resources from a Public Health Nurse. Information also available via internet and e-mail at www.simcohealth.org . Intake line to all health unit services. |
| New Path Youth and Family Counselling Services | Social-emotional and/or behavioural concerns. In-home service provided to parents and children. Parenting programs and social skills group programs for children. |
| Ontario Early Years Centre | Provide parents with information, education & resources to support them in their parenting role. Offer a variety of age appropriate learning opportunities for children 0-6. All programs provided are free. |
| Optometrist | Recommended children should have their vision checked at 6 months, 3 years and annually. The cost is covered by OHIP until 19 years of age and parents can self refer. |
| Rosewood Shelter | La Maison Rosewood Shelter emergency shelter for abused women and their children. 24 hour telephone crisis line, 24 hour line: 705-526-4211 or 1-800-461-1750 |
| Simcoe County Infant Development Simcoe Community Services | Serving infants across Simcoe County. Home visiting, developmental assessment, service coordination. |
| Simcoe County Preschool Speech and Language Program, Children's Development Services Royal Victoria Hospital | Infants and preschoolers with developmental concerns and/or at risk populations. Assessment, treatment and consultation. Specialized clinics, public awareness, prevention and early identification activities. |
| Simcoe Muskoka Parry Sound Infant Hearing Program, Children's Development Services-Royal Victoria Hospital | The Simcoe Muskoka Parry Sound Infant Hearing Program provides Universal Newborn Hearing Screening, specialized infant audiological assessment, high risk monitoring, communication development services and brief family support for those who meet the eligibility criteria. |
| Simcoe Muskoka Parry Sound Blind Low Vision Program Children's Development Services Royal Victoria Hospital | Program provides assessment and intervention services through an Early Childhood Vision Consultant for infants and preschool children who are Blind or Low Vision as diagnosed by an ophthalmologist. |
| The Metis Nation of Ontario | Delivers the Aboriginal Healing and Wellness program for youth and adults, and the Aboriginal Healthy Babies Healthy Children program to families and children aged 0 to 6 years of age. |
| www.211simcoemuskoka.ca | A searchable database providing easy access to community, social, health, and related government services in Simcoe County. |

Adapted from Simcoe County Services for Early Identification and Treatment of Children 0-6 yrs by Early Identification and Education Committee, March, 2005. Updated and Revised 2011

Early Intervention Services Referral Information/Ontario



* Physician referral required

Refer to the Children's Aid Society of the County of Simcoe (CAS) if child protection issues are present or disclosed 705-726-6987.

www.simcoecounty.ca/health.org

Early Intervention Services Referral/Orillia

| AGENCY/SERVICE | DESCRIPTION OF SERVICE |
|--|---|
| Audiology | Hearing assessment (all ages). |
| Barrie Area Native Advisory Circle (AHBHC and Aboriginal Family Support) | Beebminot Family Healing and Wellness program assists families in reducing poverty through education, skill development and personal growth activities. These are Cultural base services which also include parent resourcing and Parent Circles in Partnership with the Biinoojinsauk Child Care Centres. |
| Behaviour Management Services of York-Simcoe | Provides behavioural service to individuals who have a developmental disability with a significant cognitive delay. |
| Catholic Family Services Simcoe County | Counselling for individuals, couples and families for marital issues, child management concerns, family breakdown, and stress. Fees geared to income. |
| Children's Aid Society | Investigation of child welfare concerns or risk of concerns, protection. |
| Children's Mental Health Crisis Line | Children and their parents, immediate telephone response to deescalate crisis, may visit to site of crisis and/or provide follow up services |
| Children's Therapy Services/Orillia Soldiers' Memorial Hospital Occupational Therapy, Physiotherapy | Infants and preschoolers with developmental concerns and/or at risk populations. Assessment, treatment and consultation. Specialized clinics, public awareness, prevention and early identification activities. |
| Children's Treatment Network | Serving Simcoe County and York Region for children from birth to age 18 with multiple disabilities. Links Health care, education, recreation, social and community services. |
| North Simcoe Muskoka Community Care Access Centre (CCAC) | For children with medical and/or medically complex needs. Services also provided to 3- 4yr old children with rehabilitative and/or sensory needs entering the school system onwards. |
| Community Action Program for Children (CAPC) | Teen /young parent support. Low income families. Food and Nutrition supports. Variety of free programs and supports for parents and their children. |
| Enaahitig Healing Lodge and Learning Centre Enaahitig Outreach Mental Health Team | Offers day and residential program to persons of Aboriginal ancestry. Program to support individuals in a traditional and holistic manner. Day programs include counseling services, youth groups, crafting circles, seasonal ceremonies and traditional teachings. |
| Early Intervention Program Catulpa Community Support Services | Developmental concerns/behaviour/at risk. Support to children in inclusive preschool programs. Individual work with parent(s) and children. |
| Green Haven Shelter for Women | Emergency Shelter, individual and group counseling, 24 hour crisis line. |
| Oral Health Simcoe Muskoka District Health Unit | Children In Need of Treatment (CINOT) ext: 8804. Urgent dental concerns for children 0 to 16 th birthday years. Healthy Smiles Ontario (HSO) ext: 8810. Preventative services, based on family income. Other inquiries via general number. |
| Healthy Babies Healthy Children Program Simcoe Muskoka District Health Unit | Home visits with a Public Health Nurse and Family Home Visitors for parenting support, service coordination, and linking to community resources. Intake line to all health unit services. |
| Health Connection Simcoe Muskoka District Health Unit | Health information, support and referrals to community resources from a Public Health Nurse. Information also available via internet and e-mail at www.simcohealth.org . Intake line to all health unit services. |
| New Path Youth and Family Counselling Services | Social-emotional and/or behavioural concerns. In-home service provided to parents and children. Parenting programs and social skills group programs for children. |
| Ontario Early Years Centre | Provide parents with information, education & resources to support them in their parenting role. Offer a variety of age appropriate learning opportunities for children 0-6. All programs provided are free. |
| Orillia Native Women's Group | Meet the needs of FNMI women, children and families. Cultural based holistic programming including CAP-C, Prenatal Nutrition Program, parent support circles, traditional parenting and promotion of family wellness. |
| Optometrist | Recommended children should have their vision checked at 6 months, 3 years and annually. The cost is covered by OHIP until age 19 and parents can self refer. |
| Rama First Nation (Social Service Department) | Offer parent and child programming, Restorative Justice Program, Child welfare services, Prevention workshops, Maternal Health Care worker and Addictions. These services are available for members of Rama First Nation. |
| Simcoe County Infant Development Simcoe Community Services | Serving infants in Simcoe County. Home visiting, developmental assessment, service coordination. |
| Simcoe County Preschool Speech and Language Program, Children's Development Services Royal Victoria Hospital | Infants and preschoolers with developmental concerns and/or at risk populations. Assessment, treatment and consultation. Specialized clinics; public awareness, prevention, early identification and education activities. |
| Simcoe Muskoka Parry Sound Blind Low Vision Program Children's Development Services Royal Victoria Hospital | Program provides assessment and intervention services through an Early Childhood Vision Consultant for infants and preschool children who are Blind or Low Vision as diagnosed by an ophthalmologist. |
| Simcoe Muskoka Parry Sound Infant Hearing Program, Children's Development Services-Royal Victoria Hospital www.211simcoecounty.ca | The Simcoe Muskoka Parry Sound Infant Hearing Program provides Universal Newborn Hearing Screening, specialized infant audiological assessment, high risk monitoring, communication development services and brief family support for those who meet the eligibility criteria. A searchable database providing easy access to community, social, health, and related government services in Simcoe County. |

Adapted from Simcoe County Services for Early Identification and Treatment of Children 0-6 yrs by Early Identification and Education Committee, March 2005. Updated and Revised 2011

Muskoka Community Services Referral Information Birth to School Entry



For All Children

Muskoka Parry Sound Ontario Early Years Programs

Open Drop in Play program directed to families with children from birth to age 6. Available to assist parents in finding resources, answering questions and referrals to appropriate services as needed. A variety of parent education and community guest speakers attend programs.

Phone: 705-645-3027 Toll Free: 1-800-461-7404

★ Physician referral required.

▲ District Service – General Intake number

Refer to Family, Youth and Child Services of Muskoka if child protection issues are present or disclosed 705-645-4426 or 1-800-680-4426

All Services have a "No Wrong Door Policy"

www.18monthvisit.ca
www.simcoemuskokahealth.org
www.communityinformationmuskoka.ca

| AGENCY | DESCRIPTION OF SERVICE |
|---|--|
| Audiologist | Hearing tests and hearing aid prescription. Recommended for children with ongoing middle ear problems and in conjunction with ENT consultation. Please consult your local audiologist. |
| Optometrist | Recommended children should have their vision checked at 6 months, 3 years and annually. The cost is covered by OHIP until age 19 and parents can self refer. Please consult your local optometrist. |
| Community Living – Huntsville Resource Teacher Program | Resource Teacher Program: Provides support to families whose children are 2 to 6 years old and who have a developmental delay or at risk for a delay. Resource Teachers provide support to families with consultation in their homes, including developmental screenings, home programming and helping families advocate for their children in school settings. |
| Community Living – South Muskoka Children's Services | Resource Teacher Program: Provides support to families whose children are 2 to 6 years old and who have a developmental delay or at risk for a delay. Resource Teachers provide support to families with consultation in their homes, including developmental screenings, home programming and helping families advocate for their children in school settings. |
| | Family Support Program: Assists families of children (3+), who have a developmental disability, with the co-ordination and accessing of supportive resources. Resource Co-ordination may include: identifying appropriate services, school advocacy, family education, financial co-ordination. |
| | Children's Respite Program: Supports families with temporary relief from the demands of caring for a child (0+) who are at risk of delay or diagnosed with a developmental disability. |
| Family, Youth and Child Services of Muskoka | Intensive Child and Family Services Worker (ISW) 0-6: Provides community based early identification, intervention and treatment programs for children up to 6 years of age with mental health difficulties, and their families. The focus of this program is to strengthen the functioning of parents and children by building on their individual skills and supports. The family's strengths and abilities are the foundation for change. The ISW program is also available for children 7-18 years of age. |
| | Triple P Parenting: Aims to prevent severe behavioural, emotional and developmental problems in children by enhancing the knowledge, skills and confidence of parents. |
| | Intensive Service Coordinator (ISC): Provides systems coordination services for complex special needs children and youth, their families and community service providers including assessment, planning, monitoring and advocacy. ISC enhances and assists already existing service teams. There must be other community service providers in place. |
| | Child and Family Therapists: Helps children, youth and their families who are experiencing mental health difficulties with a broad range of services. Professionals assist families in identifying and addressing their child's behavioral, social and/or emotional issues. |
| | <i>There are many other programs available including Group Programming which can include Triple P, children exposed to domestic violence, children who are experiencing a mental health issue and addictions strengthening families.</i> |
| HandsTheFamilyHelpNetwork.ca | Infant and Child Development Program: Provides service to families of infants and young children with developmental concerns. Provides home visiting, developmental assessments and service coordination in Muskoka/Parry Sound Districts. (0-6 years) |
| | Development Support Services: Serves adults and children with cognitive disabilities. (2.5-18 years) |
| | Great Beginnings – Prenatal Nutrition Program: Provides support and information for women prenatally and with infants up to 6 months of age. Provides free healthy snacks, food to take home, including prenatal vitamins and free transportation. |
| | Great Beginnings - Growing Up Program: Provides an opportunity for parents with children 0-6 years of age to interact and play with their children. A \$10.00 food voucher is distributed and free transportation is available. |
| | Early Literacy Specialist: Supports parents and professionals by providing expertise, information and practical advice on how to effectively develop early literacy skills in children 0-6 years of age. |
| | Intensive Behavioural Intervention (IBI): Provides centre-based, intensive behaviour therapy (20 to 35 hours per week) to children under 18 years of age who are diagnosed with moderate to severe autism. The purpose of the IBI is to increase the intelligence in order to prepare him/her for learning opportunities at school, at home, and in the community. |
| | Behaviour Communication Therapy: Uses Applied Behavioural Analysis (ABA) to provide in-home behaviour therapy and consultation to parents of children and youth diagnosed with Autism. |
| One Kids Place | Speech & Language Therapy (SLP): Assists children in achieving their optimum potential in the areas of speech, language, communication, cognition and swallowing. This service is available until the child enters SK at which time the child is transitioned to school based services. |
| | Occupational Therapy (OT): Supports children and youth to function at their best in activities of daily living (i.e. hygiene, feeding, dressing and writing). This service is available until the child enters JK at which time the child is transitioned to school based services. |
| | Physiotherapy (PT): Supports children to enhance mobility, improve physical function and positioning, and utilize adaptive equipment. This service is available until the child enters JK at which time the child is transitioned to school based services. |
| | Applied Behaviour Analysis (ABA) Services and Supports: Provides support to children and youth of age 0-17 (up to 18th birthday) with a diagnosis of Autism Spectrum Disorder. Services target the development of specific skills in the areas of communication, social/interpersonal, daily living and behaviour management/emotional regulation. |
| | <i>One Kids Place also offers a number of specialty clinics including Seating and Mobility, Orthotics, Augmentative and Alternative Communication, Developmental Clinic, and Swallowing and Feeding Clinic. These clinics are available to children 0-18 years of age.</i> |
| Simcoe Muskoka District Health Unit | Health Connection: Health information, support and referrals to community resources from a Public Health Nurse. Information also available via internet and e-mail at www.simcomuskokahealth.org . Intake line to all health unit services. |
| | Healthy Babies Healthy Children Program: Home visits with a Public Health Nurse and Family Home Visitors for parenting support, service coordination, and linking to community resources. |
| | Oral Health Program: Children In Need of Treatment (CINOT) ext: 8804. Urgent dental concerns for children 0 to 18th birthday years. Healthy Smiles Ontario (HSO) ext: 8810. Preventative services, based on family income. Other inquiries via general number. |
| | Triple P Parenting: The program aims to support parents by enhancing knowledge, skills and confidence to support behavioural, emotional and developmental problems in children. |
| Other Community Resources District of Muskoka | Community supports available for Children and Families: www.communityinformationmuskoka.ca |