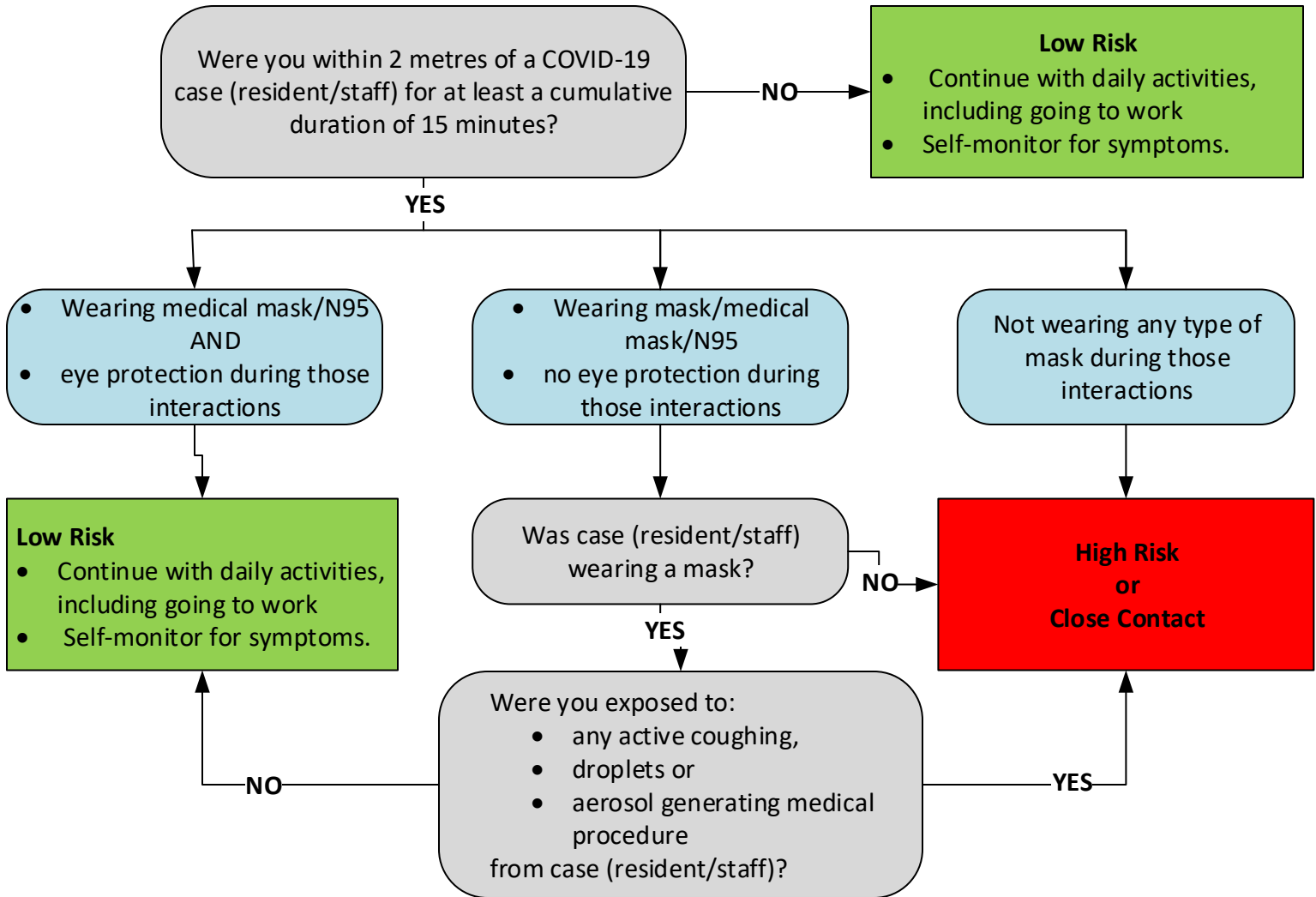


This flowchart is intended to be used by staff to assess their risk level if they have recently been in contact with a positive COVID-19 case and actions that should be taken based on the assessment.



High Risk or Close Contact:

You do NOT need to self-isolate.

For the management of **staff** high risk/close contacts see:

1. COVID-19 Guidance: Long-Term Care Homes, Retirement Homes, and Other Congregate Living Settings for Public Health Units including Appendix D
2. Appendix 1: Case Definitions and Disease Specific Information Disease: Diseases caused by a novel coronavirus, including Coronavirus Disease 2019 (COVID-19), Severe Acute Respiratory Syndrome (SARS) and Middle East Respiratory Syndrome (MERS)