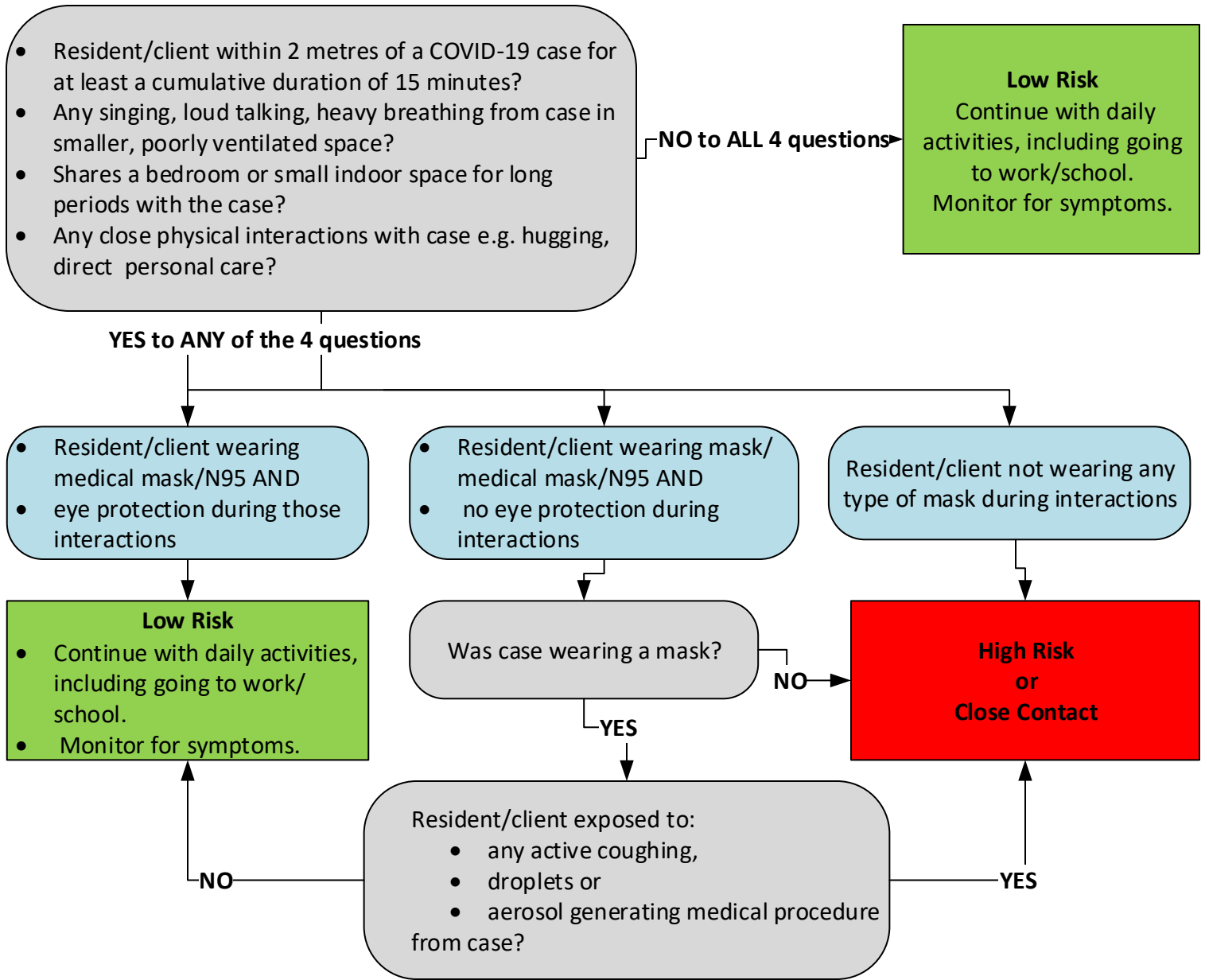


This flowchart is intended to be used to assess the risk level for CLS residents/clients who have recently been in contact with a positive COVID-19 case and actions that should be taken based on the assessment.



High Risk or Close Contact:

Do NOT need to self-isolate

For the management of **resident** high risk/close contacts see:

1. COVID-19 Guidance: Long-Term Care Homes, Retirement Homes, and Other Congregate Living Settings for Public Health Units including Appendix D