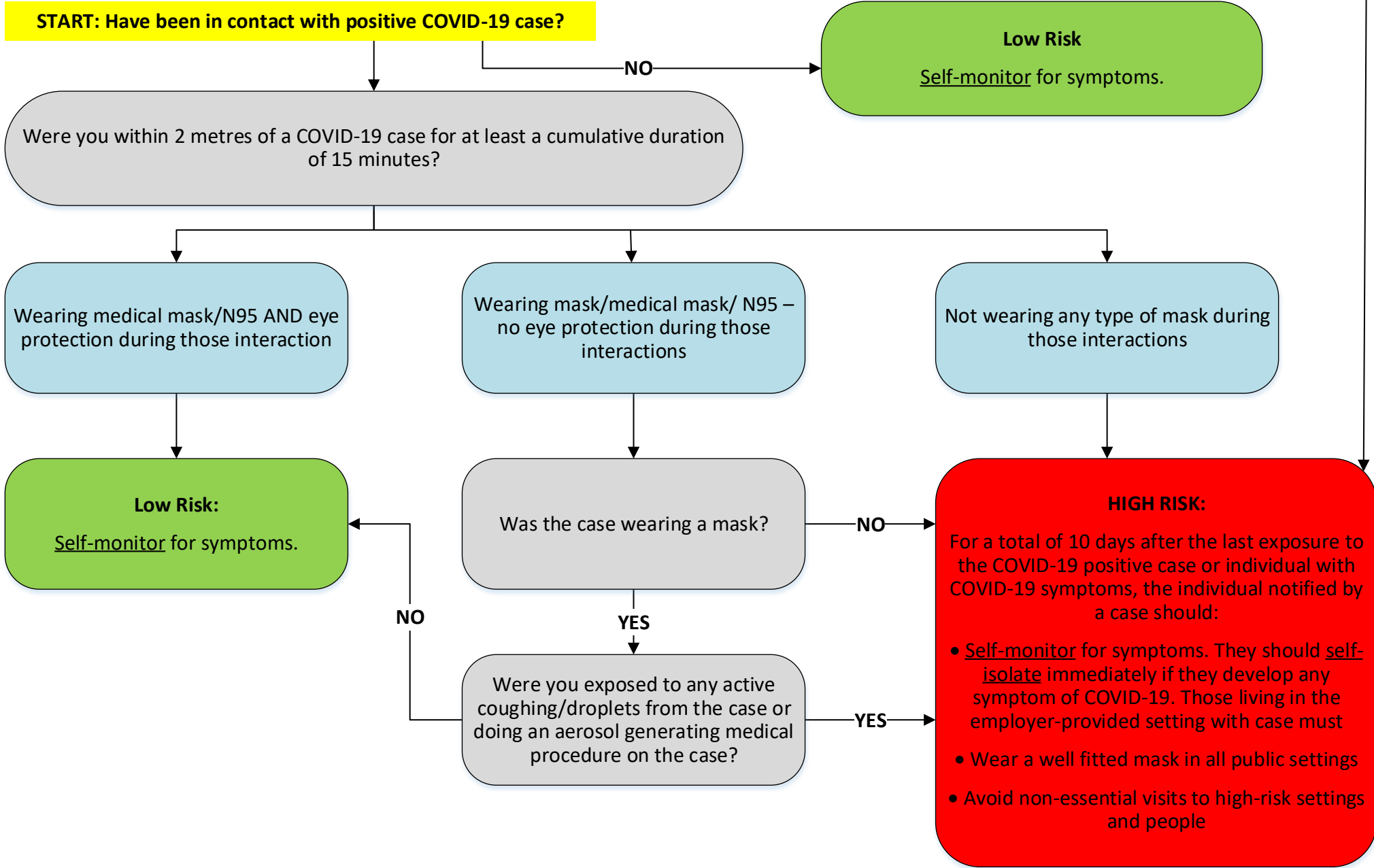


RISK ASSESSMENT TOOL: AM I A CLOSE CONTACT?

This flowchart is intended to be used by individuals to assess their risk level if they have recently been in contact with a positive COVID-19 case and actions that should be taken based on the assessment.

When there is more than 1 case of COVID-19 in an employer provided living setting, all workers who live in the same setting as the case are considered high risk.



Testing

IAWs in employer-provided living settings are considered a priority group for symptomatic PCR testing in accordance with the current COVID-19 Provincial Testing Guidelines.

Please check the Ministry of Health’s testing resources on our website for the most up to date provincial COVID-19 testing information.