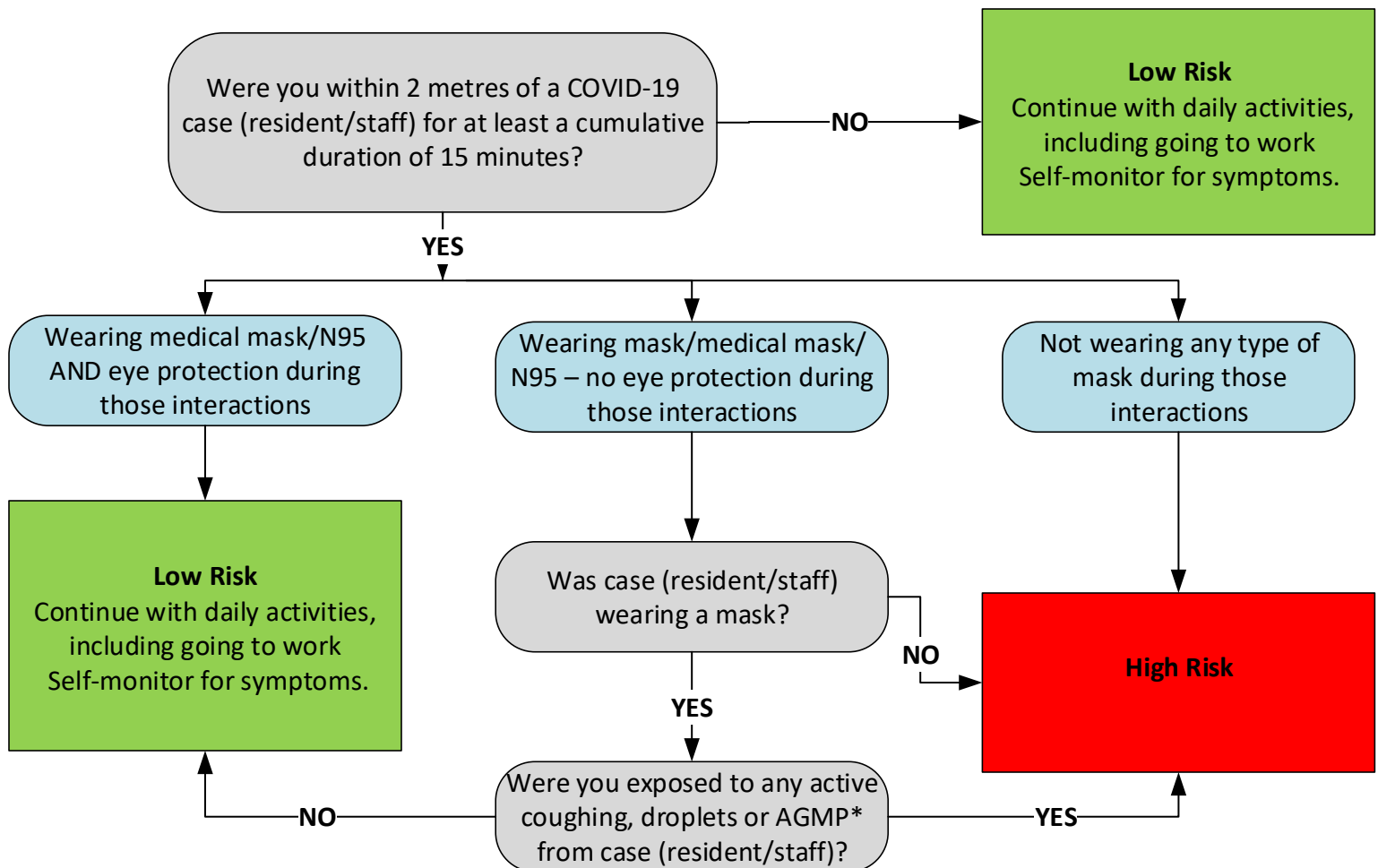


## COVID-19 CONGREGATE SETTING STAFF RISK ASSESSMENT TOOL: AM I A CLOSE CONTACT?

This flowchart is intended to be used by staff to assess their risk level if they have recently been in contact with a positive COVID-19 case in the workplace. It is intended to help determine their risk of exposure to COVID-19 and actions that should be taken based on the assessment.



### High Risk and not living with case:

You do NOT need to self-isolate. Self-monitor for symptoms for 10 days after your last exposure. Seek testing immediately. Wear a well-fitted mask in public, physical distance and maintain other public health measures for 10 days following your last exposure if leaving home. You should **NOT visit or attend work in any highest risk settings** and not visit individuals who may be at higher risk of illness (i.e. seniors or immunocompromised) **for 10 days after your last exposure**. Report your exposure to any employer and follow any work restrictions.

NOTE: High risk staff who have previously tested positive for COVID-19 in the last 90 days (based on PCR or RAT) can work in the highest-risk setting, as long as they are and remain asymptomatic.

If you develop/have symptoms, self-isolate immediately and get tested.

\*AGMP – aerosol generating medical procedure