

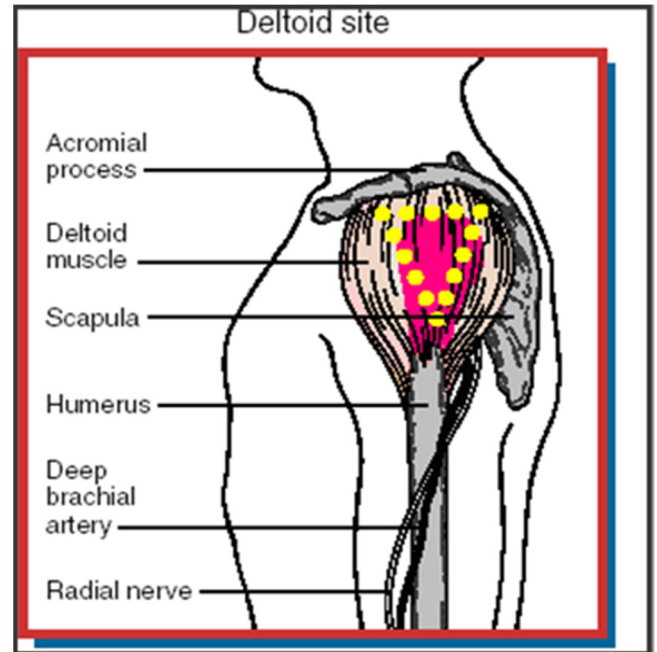
Proper Influenza Vaccine Administration Technique

Attention: Participating UIIP Pharmacies

Date: November 17, 2016

The health unit has received reports of local reactions following influenza immunization that are consistent with vaccine administration errors. As a reminder, when administering injectable influenza vaccine intramuscularly:

- Always practice hand hygiene before and after administering flu vaccine to each client. The use of gloves is not routinely recommended.
- Cleanse the skin with an alcohol swab.
- For all clients five years of age and older, a 1" needle is to be used, unless the client's muscle mass warrants a 1½" needle.
- Define the site by drawing a triangle with its base at the lower edge of the acromion and its peak above the insertion of the deltoid muscle. The injection site is in the center of the triangle, which in most children & adults would be approximately three finger widths below the acromial process.
- The needle should be positioned at a 90 degree angle to the skin and administered deep into the deltoid muscle.
- The vaccine should be administered rapidly without aspiration.



People who receive vaccines that are not administered correctly can experience increased localized reactions and have reduced immune response to the vaccine.

Reporting Cold Chain Failures to Simcoe Muskoka District Health Unit:

A reminder that pharmacies are still required to report fridge temperatures outside of 2°- 8° to the health unit. If you are calling to report a cold chain failure, or have any questions regarding influenza vaccines please contact the Vaccine Preventable Disease Program at 705-721-7520 or toll free at 1-877-721-7520 ext. 8806.