

## Healthy Menu Choices Act, 2015

# Application of the Act in Movie Theatres

This document is intended to help food service premises owners and operators, public health stakeholders, and the general public understand, implement and enforce Ontario's menu labelling legislation as it may apply to regulated movie theatres. This fact sheet should be used in conjunction with ***A Guide to Menu Labelling Requirements in Regulated Food Service Premises in Ontario***.

The *Healthy Menu Choices Act, 2015* and its accompanying regulation come into effect on January 1<sup>st</sup>, 2017 (with the exception of the revised contextual statement, which comes into effect January 1<sup>st</sup>, 2018). Owners and operators of regulated food service premises are required to comply with the menu labelling legislation as of January 1<sup>st</sup>, 2017.

## What is a standard food item?

A "standard food item" is any restaurant-type food or drink item that:

- is served or processed and prepared primarily in a regulated food service premises;
- is intended for immediate consumption without further preparation; and
- is standardized for portion and content.

## Where must calories be displayed?

Calories must be displayed on any written menu at or outside of a regulated food service premises. In movie theatres, a menu may include but is not limited to:

- Paper Menus;
- Electronic Menus (e.g. menus on tablets, self-order kiosks);
- Menu Boards; and
- Online Menus/Applications, Advertisements (other than billboard, radio and television advertisements), and Promotional Flyers that list prices for standard food items and provide a method that a customer can use to order delivery or take away (e.g. phone number or website).

Where standard food items are put on display, calories must be displayed on labels or tags, regardless of whether the item is also listed on the menu.

Items that are on display and labelled with a Nutrition Facts table are exempt from the requirements of the legislation. However, if the item with a Nutrition Facts table is listed on a menu, then the calories for that standard food item must be displayed on the menu.

## How must the calorie information be displayed?

Calories must be displayed:

- Adjacent (i.e. next to, above, or below) to the name or price of the standard food item;
- Unobstructed and legible to customers reading the menu, label or tag; and
- In the same font and format, and at least the same size and prominence as **either** the name **or** the price of the standard food item (e.g. same colour, boldness, style, etc.).

If an owner or operator should choose to post calories based on the font size of the price, and the fonts in the price vary in size (i.e. different sized fonts are used for the dollar value and cents value), then calories must be in at least the same size as the largest font size in the price.

The term “Calories” or “Cals” must be displayed in the same size, font, and prominence as the calorie information and in one of the two following formats:

- Adjacent to the number of calories for each standard food item; or
- As a heading above a column listing the number of calories for each standard food item.

## How must the calorie information be displayed for self-serve beverages?

For restaurant-type food or drink items that customers serve for themselves, calories must be posted on one or more signs that include the name of the item, the number of calories of a serving and the serving size, and the term “Calories” or “Cals”. The sign or signs must be clearly associated with the food or drink item, and visible by and legible to any individual where they can serve themselves.

For self-serve beverages, as an alternative to the above approach, a sign can be displayed that lists calorie ranges for each serving size of every category of beverage. The sign must be visible and legible and posted in close proximity to the dispenser.

For restaurant-type beverages that are **not** self-serve, they are to be treated as standard food items (i.e. calories for each beverage listed must be posted).

### Example #1: Self-Serve Beverage Machine

The diagram shows a self-serve beverage machine with a purple sign that reads "FOUNTAIN DRINKS". Below the sign are five white buttons. To the right of the machine is a table titled "Fountain Drinks" with columns for beverage type and calories per serving for Small, Medium, and Large cup sizes. The table lists Pop, Diet Pop, Juice, Sports Drink, and Water. Below the table is a statement about daily calorie needs. Four orange callout boxes provide additional information: 1. "Sign includes category of beverage, number of calories per serving and the serving size" points to the table. 2. "Sign posted in close proximity to the dispenser" points to the sign. 3. "Serving size determined by cup size" points to the table. 4. "New contextual statement (effective January 1, 2018) posted in close proximity to self-serve items" points to the statement below the table.

	Cals Small	Cals Medium	Cals Large
Pop	110-150	140-180	180-220
Diet Pop	0	0	0
Juice	140-180	170-210	210-250
Sports Drink	140-170	180-210	210-240
Water	0	0	0

Adults and youth (ages 13 and older) need an average of 2,000 calories a day, and children (ages 4 to 12) need an average of 1,500 calories a day. However, individual needs vary.

## How must the calorie information be displayed for combination meals?

A combination meal should be treated as a single standard food item, and calories must be posted for the entire combination meal.

- For combination meals with two or more variable items, the number of calories for the combination meal must be displayed as a range between the lowest and highest calorie options of the combination meal that are available. If the options for the combination meal are individually listed, then the number of calories for each possible option must be displayed.
- If the options in a combination meal are displayed in bulk form (not portioned into their standard portion size), the number of calories per serving and the serving size must be posted on a sign that is in close proximity to and clearly associated with the item. However, if the calories for the options in a combination meal that are displayed in bulk are posted on a menu, label or tag, then premises would be exempt from posting this information on a sign.
- If the menu, label or tag includes an option to increase or decrease the size of a combination meal, the impact of the option on the overall number of calories of the combination meal must be declared for the increased or decreased size (e.g. Upsize your Combo - "Add 150 Cals").
- If the combination meal listed on a menu, label, or tag includes an item with a Nutrition Facts table, then the calories for the item with the Nutrition Facts table must be included in the total number of calories displayed for the combination meal.

## How must calories be displayed for menu items intended to be personalized?

For items that are assembled based on customer preferences (i.e. variable or customizable items), calories must be displayed for:

- The basic preparation of the item (i.e. default);
- Each available supplementary item (e.g. dressings, sauces, toppings, flavourings); and
- Each available supplementary item for each size of the standard food item it complements (this may also be displayed as a range).

A statement must also be included that indicates that the calories of supplementary items are additional to the calories displayed for the basic preparation.

## What serving size should be used when displaying calories?

- Standard food items for individuals: Calories must be listed for the standard food item as it is sold or offered for sale. For example, if the item is sold by container size (e.g. small, medium or large), calories would have to be posted according to the size of each container.
- Standard food items intended to be shared: The number of calories of an item intended to be shared may be displayed by either:
  - displaying the number of calories of the *entire* standard food item and the number of servings that make up the entire item, or
  - displaying the number of calories of *a serving* of the standard food item and the number of servings that make up the entire item.
- Self-serve food: If the food service premises provides a serving instrument or utensil that dispenses a uniform amount of food, the serving size must be determined by the volume of a serving dispensed by the utensil. For other self-serve food items, the serving size must be a reasonable serving size determined by the owner or operator.
- Self-serve beverages: If cups or other containers are offered for self-serve drinks, serving sizes must be determined by the volume of the cups or containers, expressed in milliliters or by description of the cup size (e.g. small). For other self-serve drink items, the serving size must be a reasonable serving size determined by the owner or operator.

## Contextual Statement

A contextual statement, in English or in French, must be displayed.

As of January 1<sup>st</sup>, 2018, the following contextual statement must be displayed:

***“Adults and youth (ages 13 and older) need an average of 2,000 calories a day, and children (ages 4 to 12) need an average of 1,500 calories a day. However, individual needs vary.”***

Between January 1<sup>st</sup>, 2017 and December 31<sup>st</sup>, 2017, food service premises can choose to post the contextual statement above, or post the contextual statement as stated below:

***“The average adult requires approximately 2,000 to 2,400 calories per day; however, individual calorie needs may vary.”***

The contextual statement must be displayed:


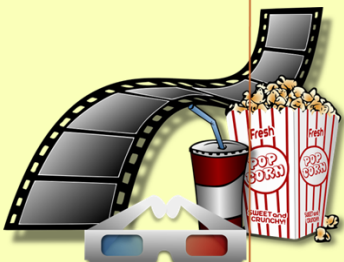
- a. On a menu, in close proximity to the standard food items listed on the menu, in the same font and format, and at least the same size and prominence as the name or price of the standard food items listed on the menu (e.g. same colour, boldness, style, etc.).
- b. Where an individual is able to order the food or drink or serve it for themselves, and a menu is not visible by, and legible to the individual, then it must be on a sign that is visible and legible to customers when making their order selections or serving it for themselves.

If a menu has multiple pages, the contextual statement needs to be visible on any open page. If a menu board has multiple panels, the contextual statement should be visible to the customer when making their order, but is not required to be on every panel.

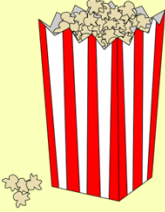

## Example #2: Menu Board in a Movie Theatre

Calories posted for the entire combination meal as if it is one standard food item	Calories posted for entire multi-person item and the number of servings. Alternatively, calories could be posted for a single serving size, and the number of servings listed	Range accounts for different drinks in the combination meal (i.e. combo with lowest calorie drink to combo with highest calorie drink)	Calories posted for increase due to size upgrade. Range accounts for different drinks in the combination meal
--	---	--	---

 <p><b>Family Combo</b> 2 Movie Tickets, Large Popcorn and a Large Drink \$29.99 (1400-1850 Cals; serves 2)</p>	 <p><b>Basic Combo</b> Small Popcorn and a Small Drink \$7.50 (600-800 Cals)</p>	<p><b>Upgrade your combo to a medium popcorn and a medium drink for \$1.99</b> (add 300-325 Cals)</p>
--	---	---

<p><b>Popcorn</b></p> <p><b>Small</b> - \$4.99 (600 Cals)</p> <p><b>Medium</b> - \$5.99 (900 Cals)</p> <p><b>Large</b> - \$6.99 (1400 Cals)</p> <p><b>Add Cheese Sauce</b> - \$1.50 (Add 100-150 Cals)</p> 	<p><b>Drinks</b></p> <p><b>Small</b> - \$2.99 (0-200 Cals)</p> <p><b>Medium</b> - \$3.99 (0-320 Cals)</p> <p><b>Large</b> - \$4.99 (0-450 Cals)</p> <p><b>Water</b> - \$1.99 (0 Cals)</p> 	<p><b>Snacks</b></p> <p><b>Hot Dog</b> - \$3.99 (600 Cals)</p> <p><b>Bag of Chips</b> - \$2.99 (300-400 Cals)</p> <p><b>Candy</b> - \$2.99 Bar 1 (200 Cals), Bar 2 (250 Cals), Bar 3 (300 Cals)</p>
--	--	---

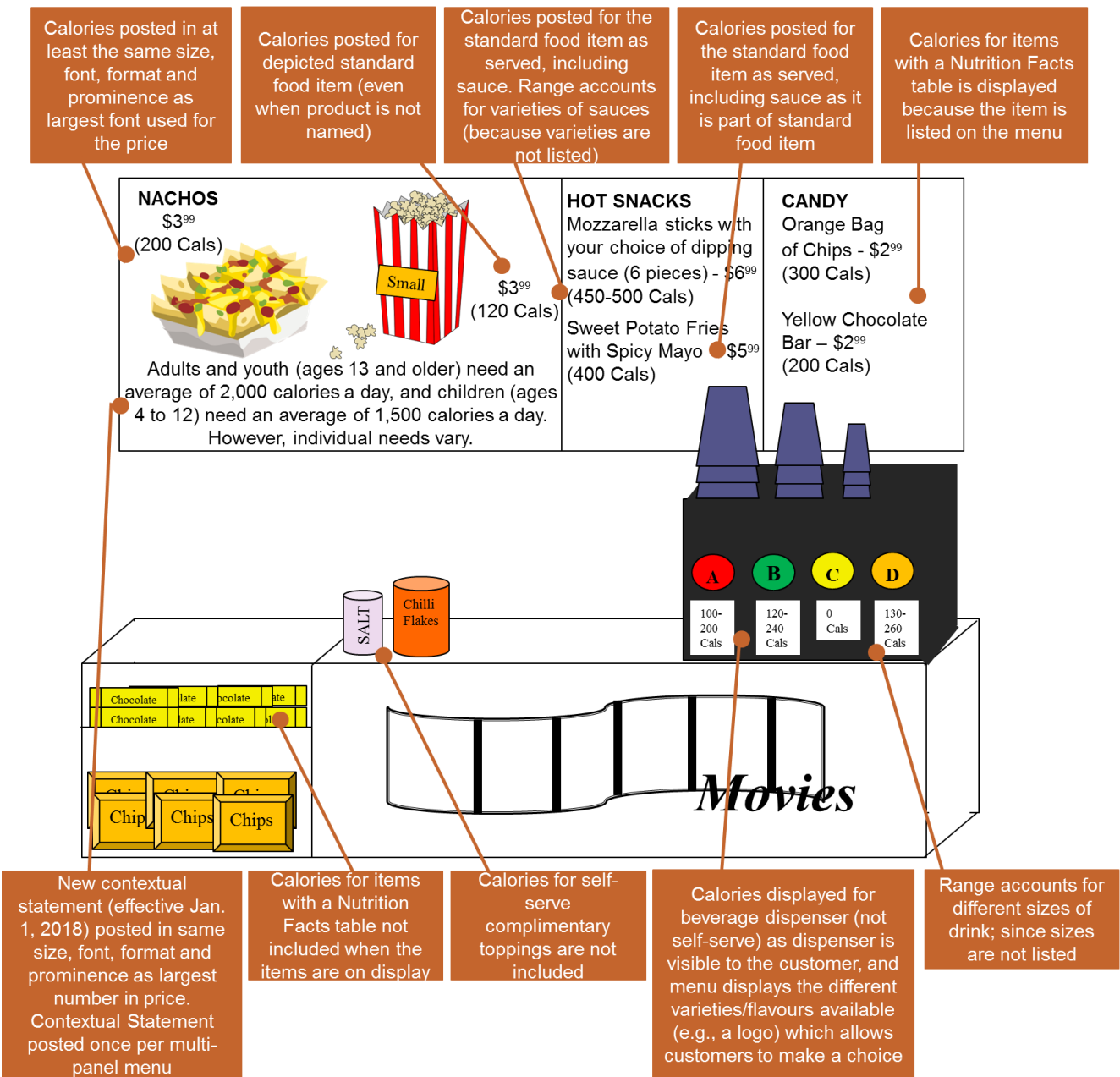
Adults and youth (ages 13 and older) need an average of 2,000 calories a day, and children (ages 4 to 12) need an average of 1,500 calories a day. However individual needs vary.

Calories posted adjacent to price. Calories posted in at least the same size, font, format and prominence as the price	Calories posted for item added. Range accounts for amount of sauce in each size	Term "Cals" beside number and calories rounded to nearest 1, 5, or 10 as applicable	New contextual statement (effective January 1, 2018) posted in same size, font, format and prominence as price of item and clearly associated with menu items	Calories for items with a Nutrition Facts table is displayed because the item is listed on the menu
--	---	---	---	---

\*For requirements regarding the contextual statement between January 1, 2017 and December 31, 2017, please refer to the Contextual Statement section in this document.

### Example #3: Menu Labelling in a Movie Theatre



\*For requirements regarding the contextual statement between January 1, 2017 and December 31, 2017, please refer to the Contextual Statement section in this document.

## Exemptions

The regulation exempts certain food and beverage items from calorie display requirements. The following exemptions may be of interest to regulated food service premises in movie theatres:

- **Temporary Food Items:** Food or drink items that are offered for sale for less than 90 days per calendar year, whether consecutively or non-consecutively.
- **Condiments:** Self-serve condiments that are available free of charge and that are not listed on the menu.
- **Special-Order Items:** Food or drink items that are prepared on an exceptional basis, in response to a specific customer request, and that deviate from the standard food items offered by the regulated food service premises. Please note that this does not include items intended to be personalized that are assembled based on customers' choices.
- **Alcoholic Beverages on Display:** Alcoholic beverages that are on display (e.g. back bar). Note that alcoholic beverages listed on a menu require calorie labelling.
- **Items with a Nutrition Facts table:** Standard food items that are on display and labelled with a Nutrition Facts table. Note that items with a Nutrition Facts Table that are listed on a menu require calorie labelling.
- **Vending Machines:** Food or drink items in a vending machine.

## Disclaimer

This fact sheet is intended to reflect the policy intent, as supported by the legislation. The ministry recognizes that application to each regulated food service premises is subject to the specific realities of each food service premises. Stakeholders are encouraged to speak to their legal counsel about specific questions that they may have regarding how the Act and regulation apply to their food service premises.

This document is intended to help owners and operators of regulated food service premises understand and implement Ontario's menu labelling legislation. This document provides summary information about the *Healthy Menu Choices Act, 2015* and the regulation (O. Reg. 50/16) made under the Act. The document is provided for educational use only, and is not complete or exact reproductions of the legislation. It is not intended, or to be used, as legal advice about the requirements for menu labelling. Such advice should be obtained from lawyers. Where there is a discrepancy between anything in this document and a legislative provision, the legislation prevails.

## Additional Information

For further information about the *Healthy Menu Choices Act, 2015*, please access the legislation and regulation at <https://www.ontario.ca/laws/statute/15h07>.

Questions or comments about this fact sheet can be directed to [menulabelling@ontario.ca](mailto:menulabelling@ontario.ca).