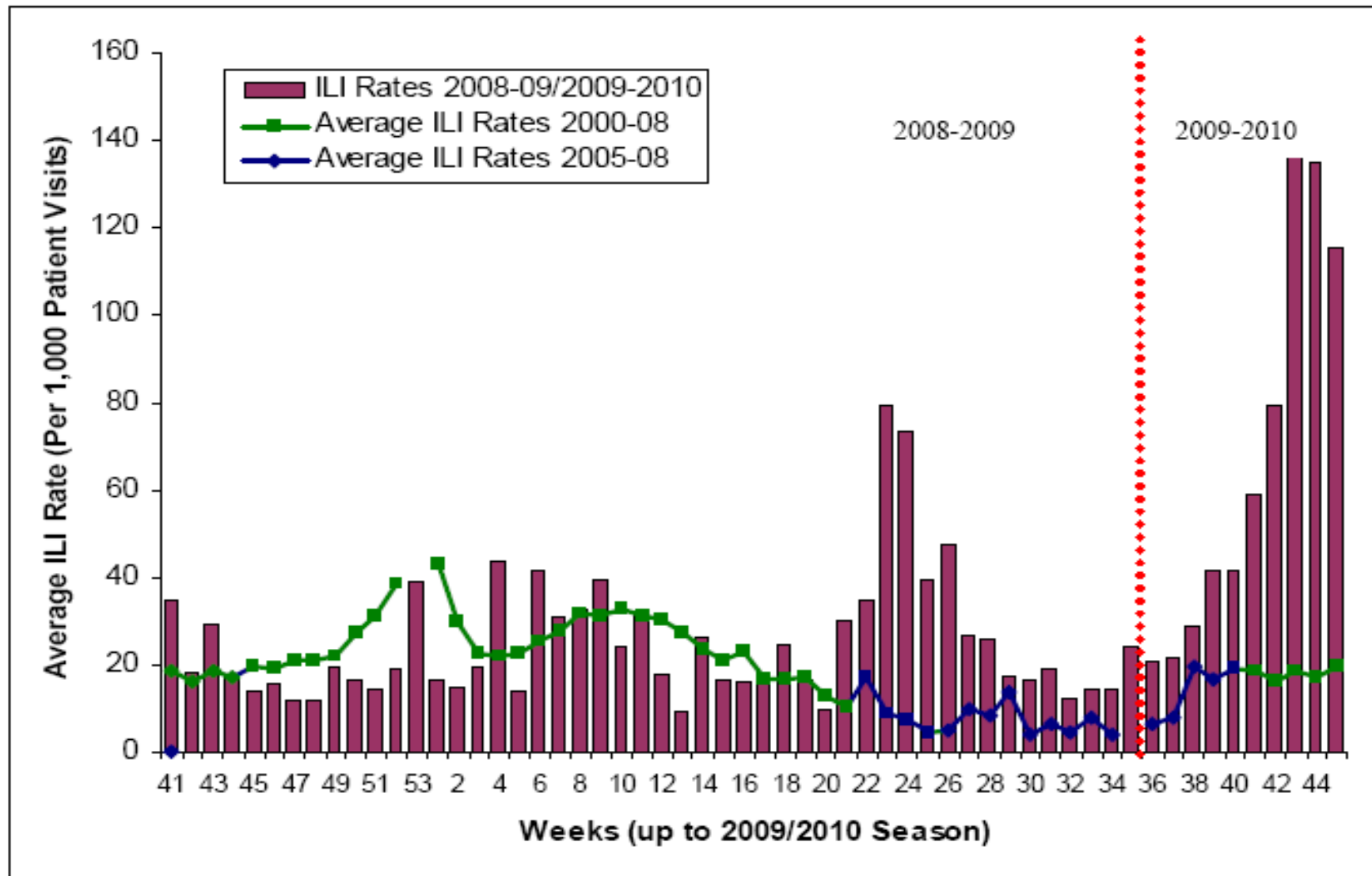


Figure 13: Average influenza-like illness (ILI) consultation rate (per 1,000 patient visits) reported by sent physicians* in Ontario up to the 2009-10 surveillance season, by report week, compared to Ontario average (1999/2000 to 2007/08 seasons).



Source: Public Health Agency of Canada

Simcoe Muskoka Experience

Outcome	1 st Wave	2 nd Wave	Total	Seasonal Influenza A (2006-2008)	Predicted in our Pandemic Plan (Low-High)
Hospitalizations (Rate per 100,000)	5 (1.0)	76 (14.8)	81 (15.8)	90 (18.0)	301 – 1,094 (63.1 – 229.3)
ICU Admissions (Rate per 100,000)	2 (0.4)	12 (2.3)	14 (2.7)	Not Available (n/a)	Not Available (n/a)
Deaths (Rate per 100,000)	0 (0.4)	3 (0.6)	3 (0.6)	9 (1.8)	118 – 331 (24.7 – 69.4)
Outbreaks	5 Camps	2 LTC + 1 Correctional	8 Total	5 – 10	Not Available (n/a)